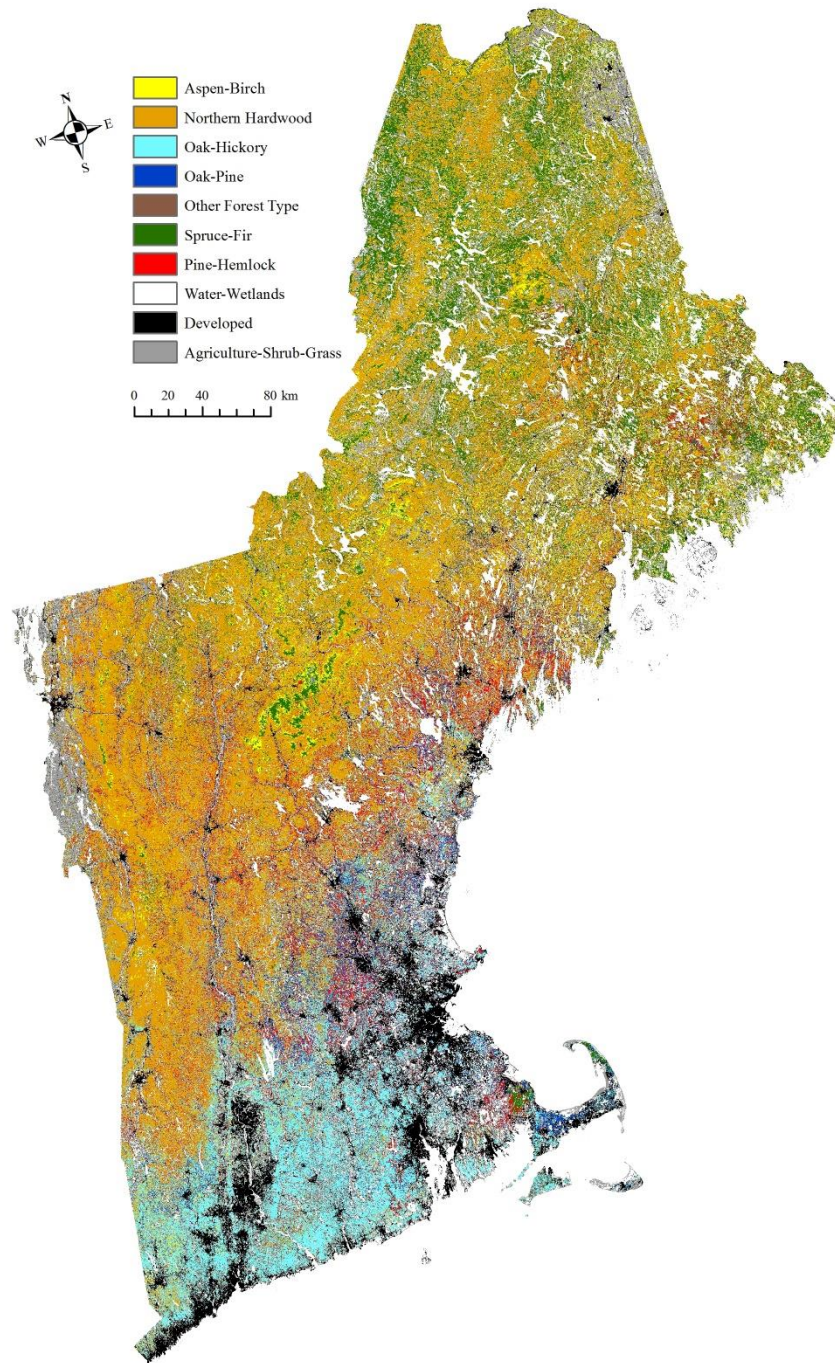


# The Maine Woods: A History of Resiliency

Richard W. Judd  
Department of History  
University of Maine







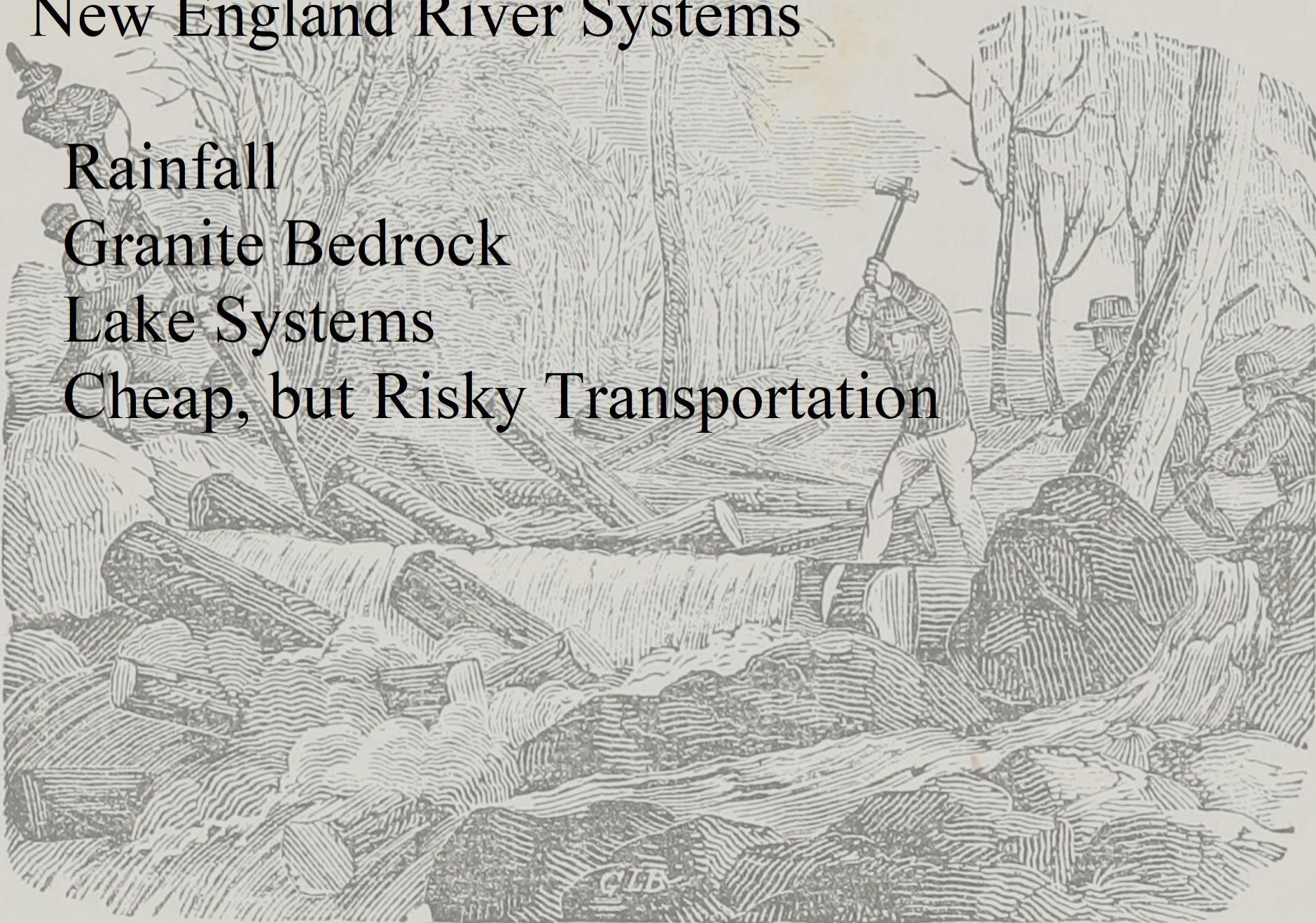
# New England River Systems

Rainfall

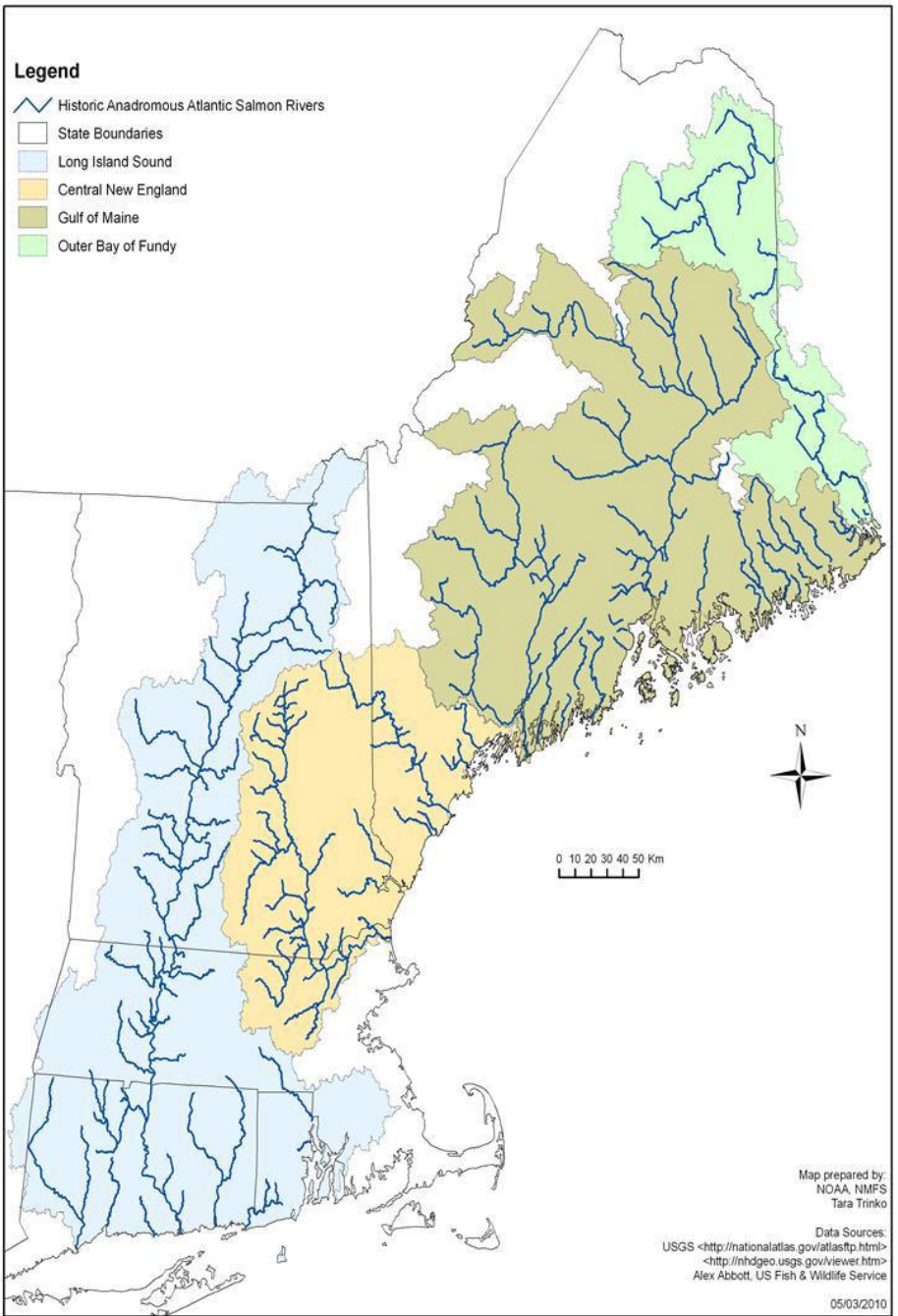
Granite Bedrock

Lake Systems

Cheap, but Risky Transportation



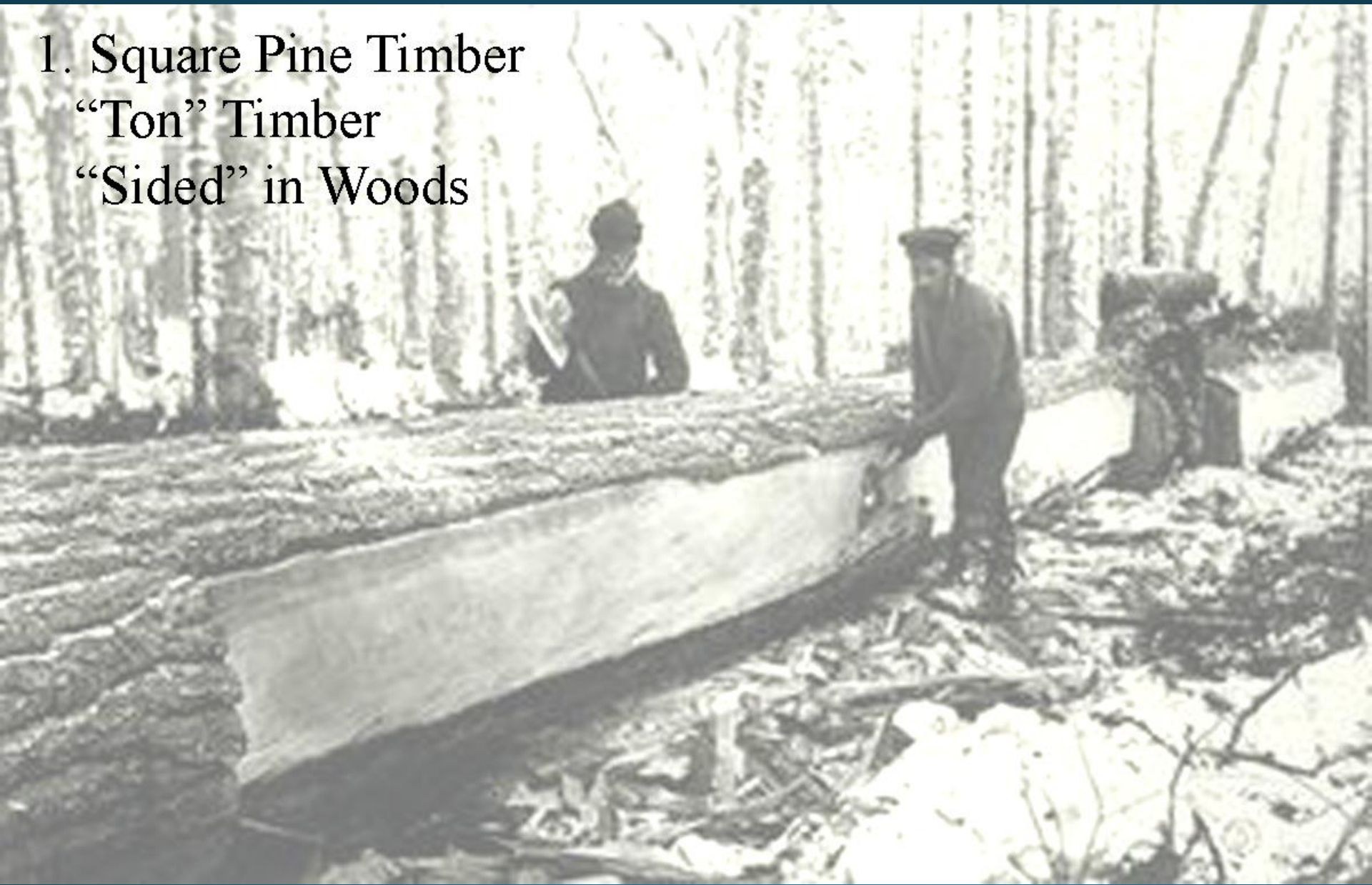






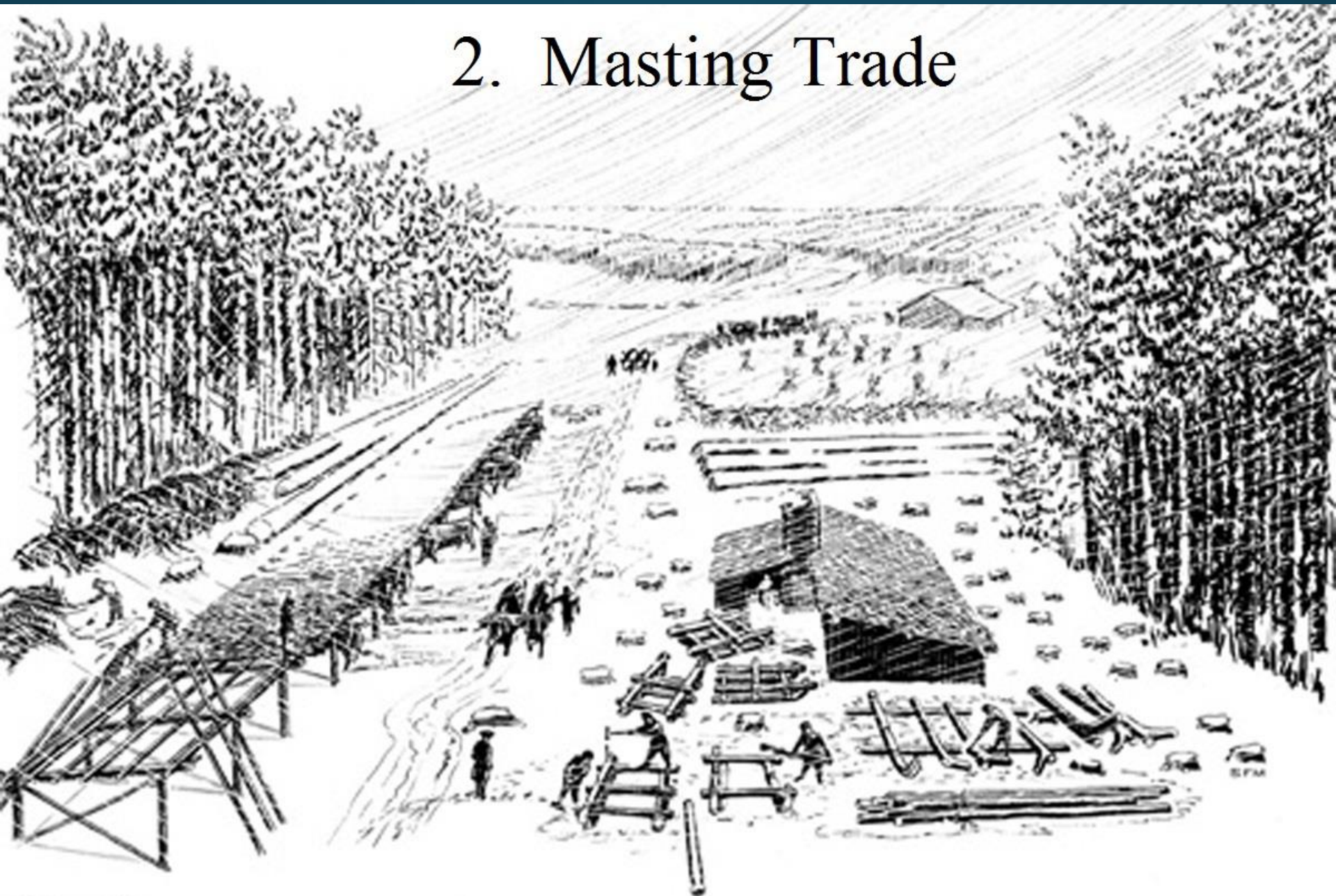
### 3. Climate

1. Square Pine Timber  
“Ton” Timber  
“Sided” in Woods





## 2. Mastig Trade



**Hovels**



**Limbing**



## Masting Trade

- Very Lucrative
- Capital Intensive
- Highly Selective Removal
- Carefully Regulated
- Undermined by Revolution



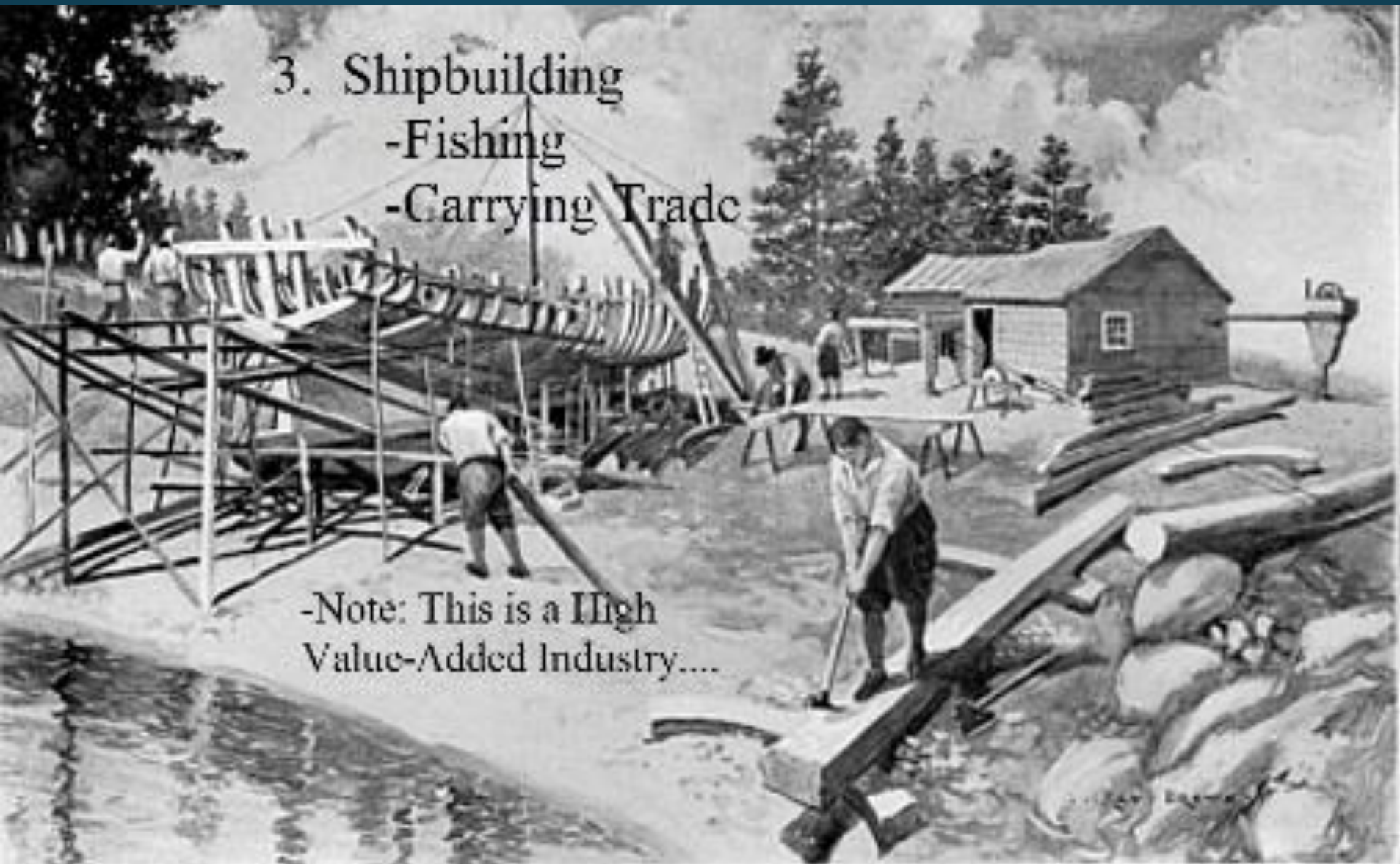
**Mast Depot**

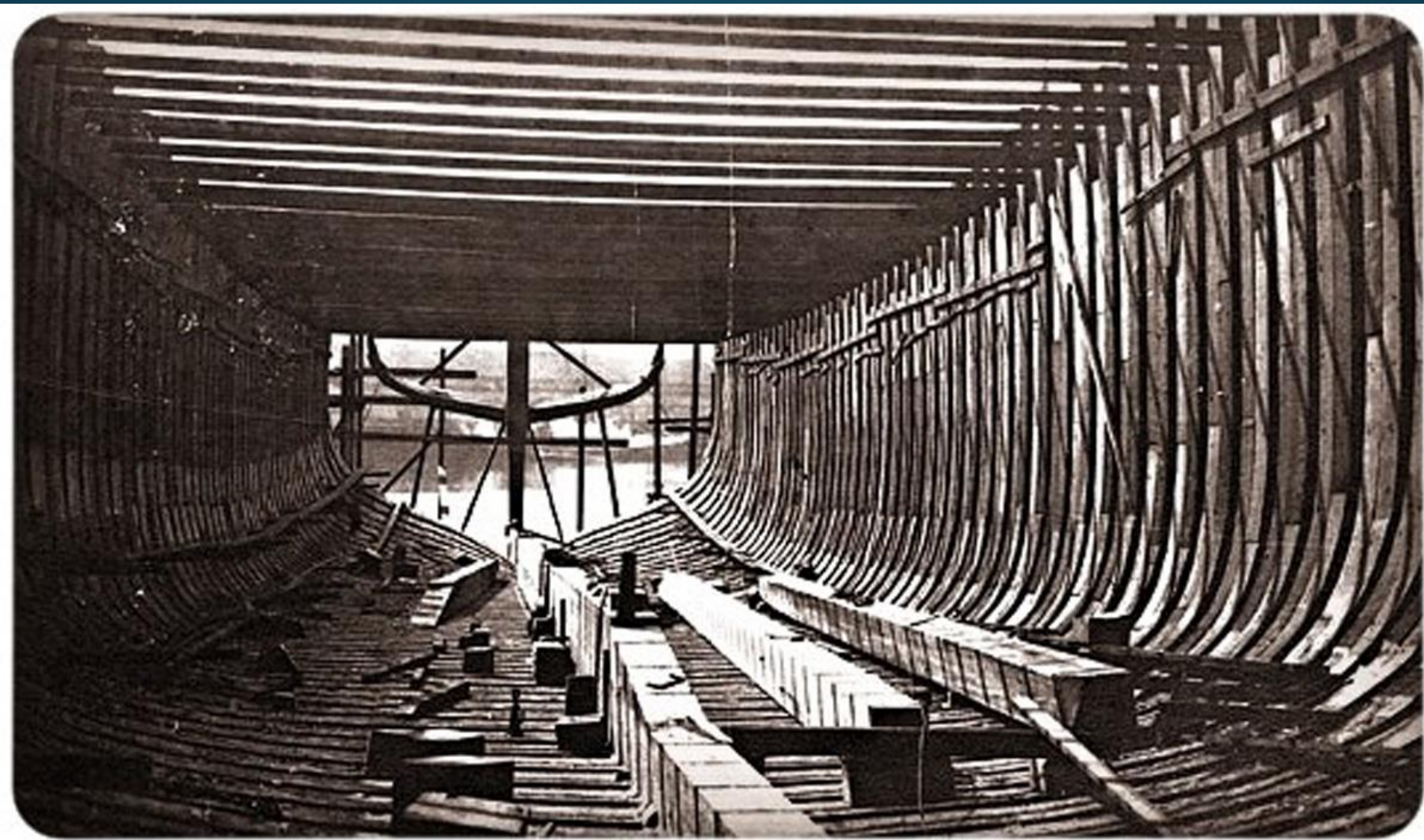
### 3. Shipbuilding

-Fishing

-Carrying Trade

-Note: This is a High  
Value-Added Industry....







988. A 2000 ton sailing vessel, Bath, Me.





Frames, ribbing: coastal black spruce , white oak

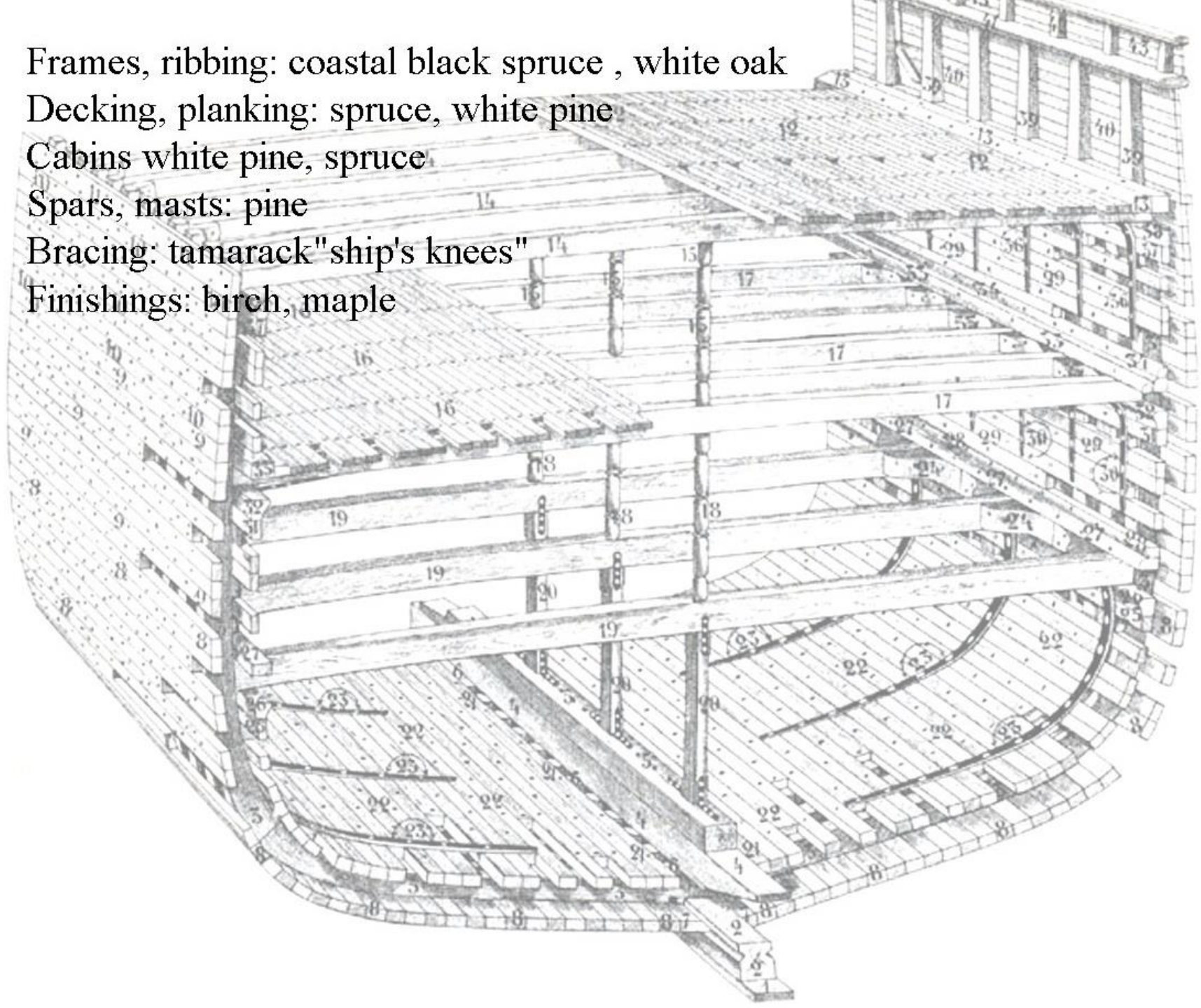
Decking, planking: spruce, white pine

Cabins white pine, spruce

Spars, masts: pine

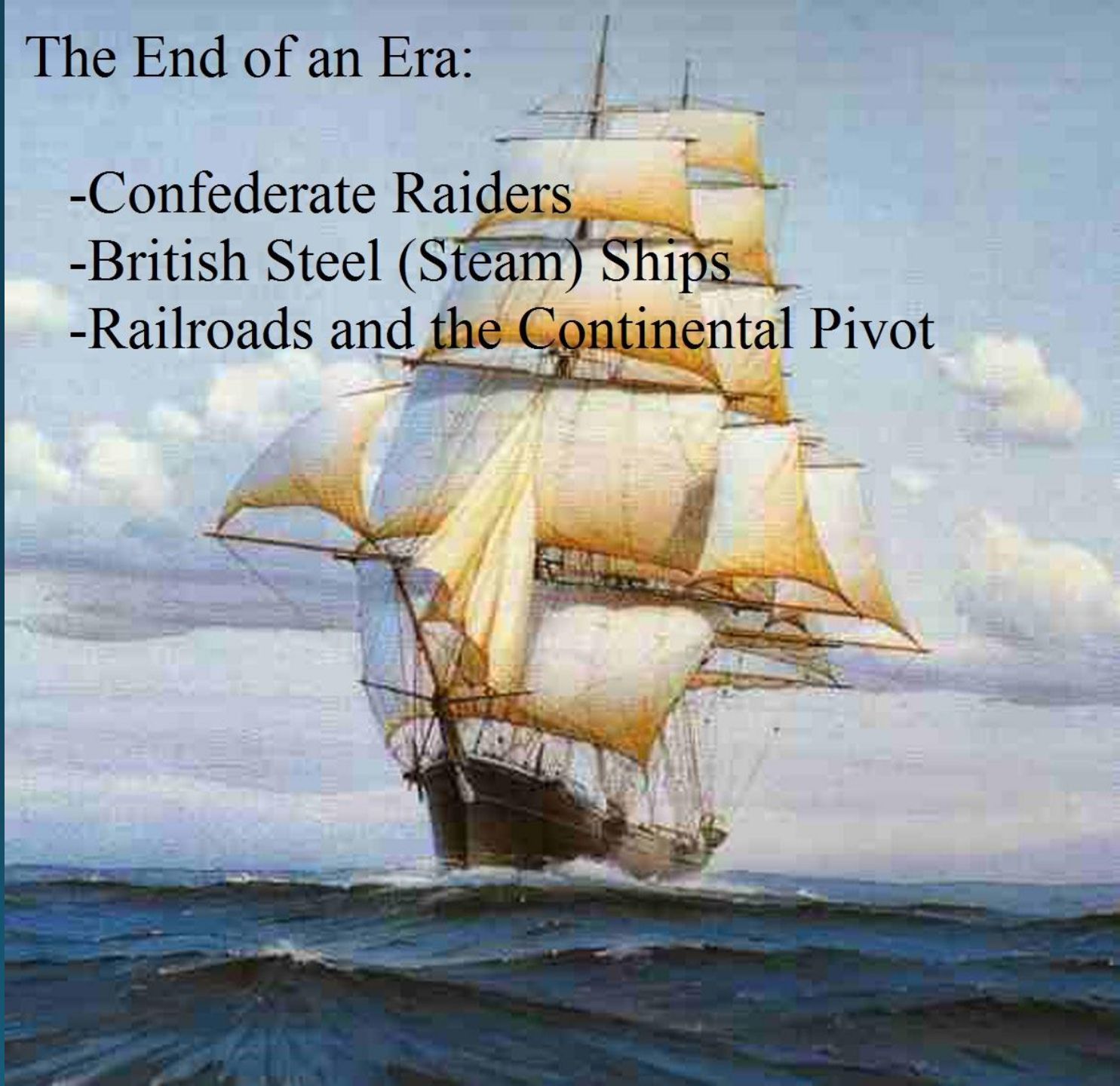
Bracing: tamarack "ship's knees"

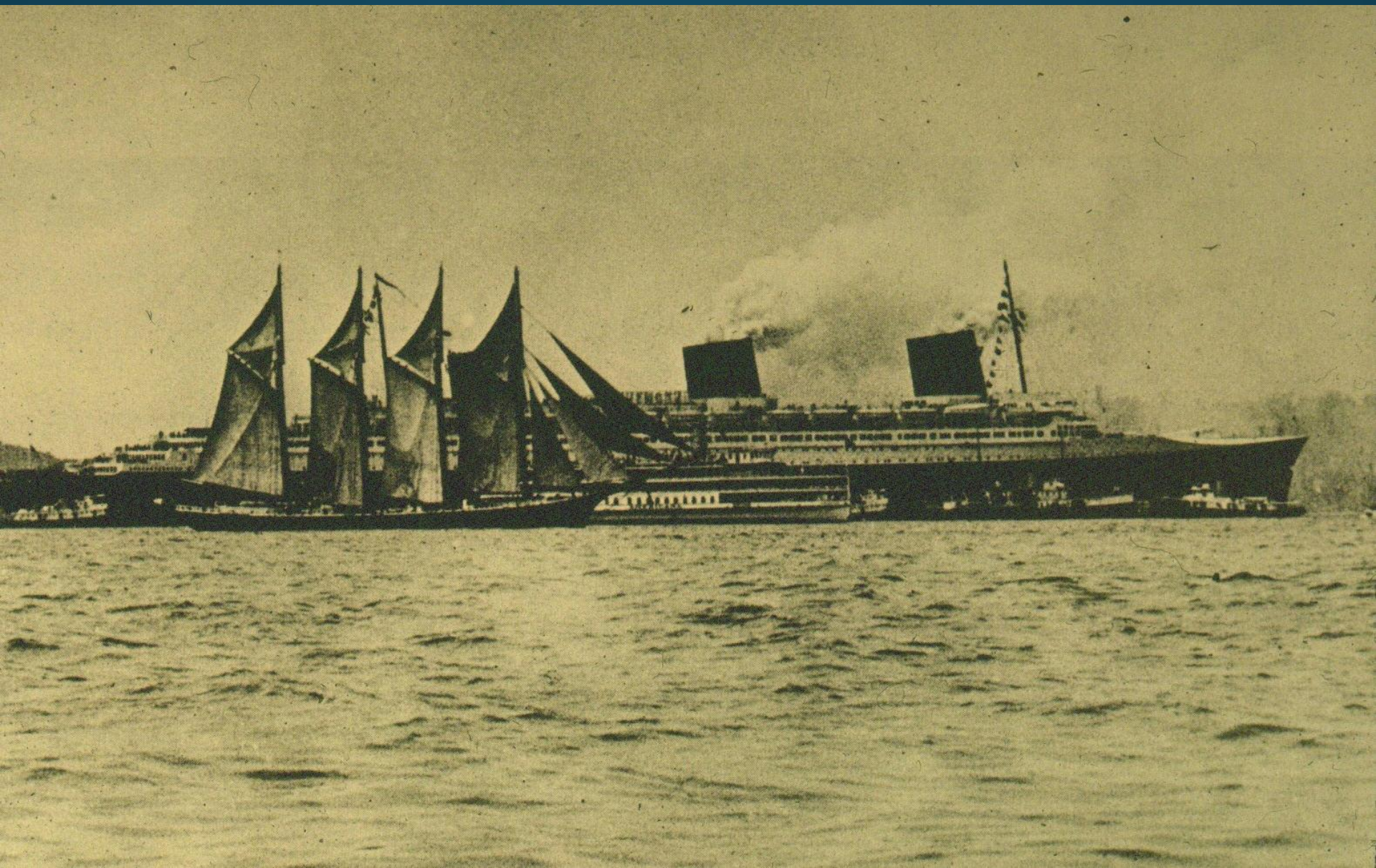
Finishings: birch, maple

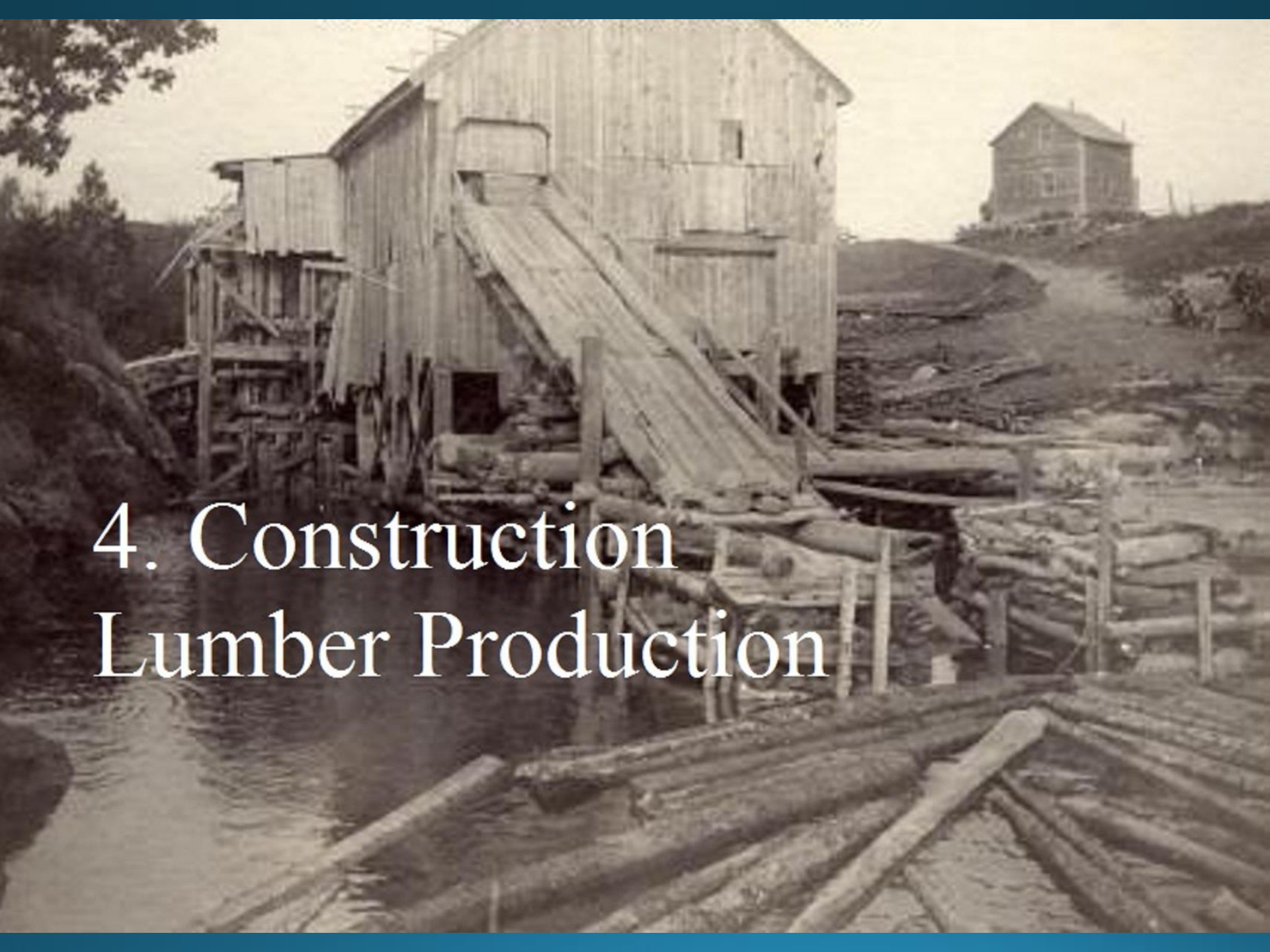


# The End of an Era:

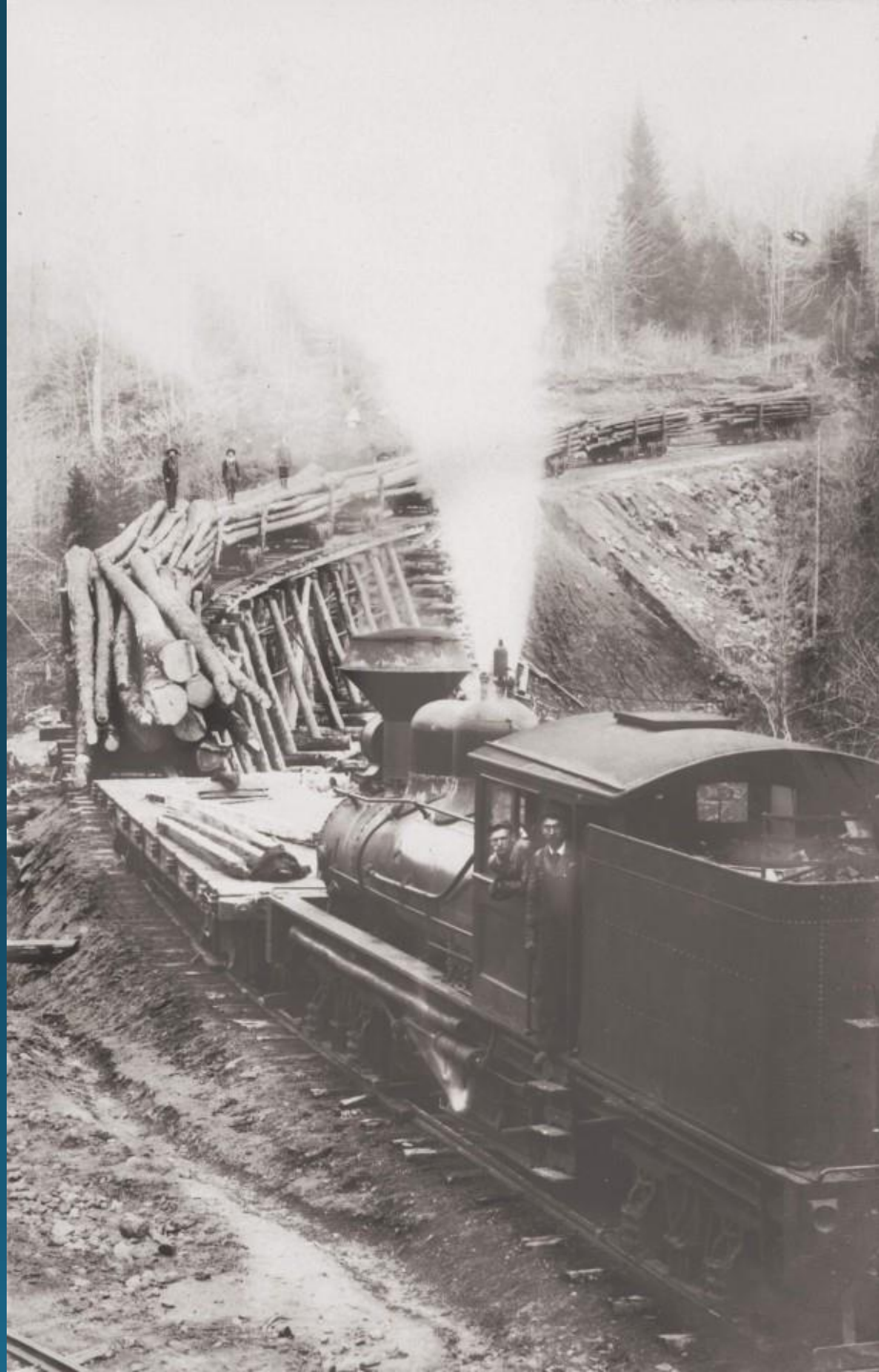
- Confederate Raiders
- British Steel (Steam) Ships
- Railroads and the Continental Pivot



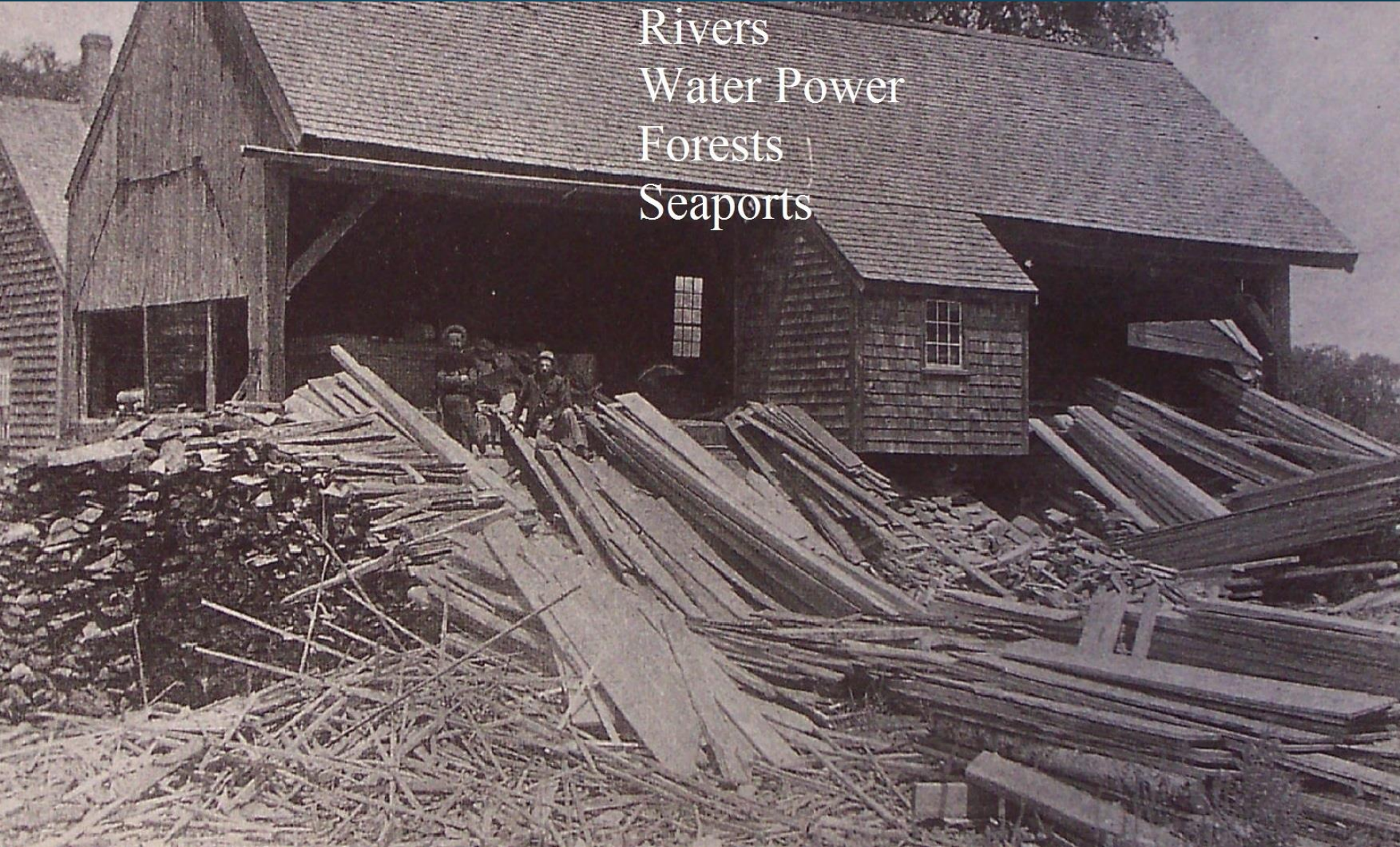


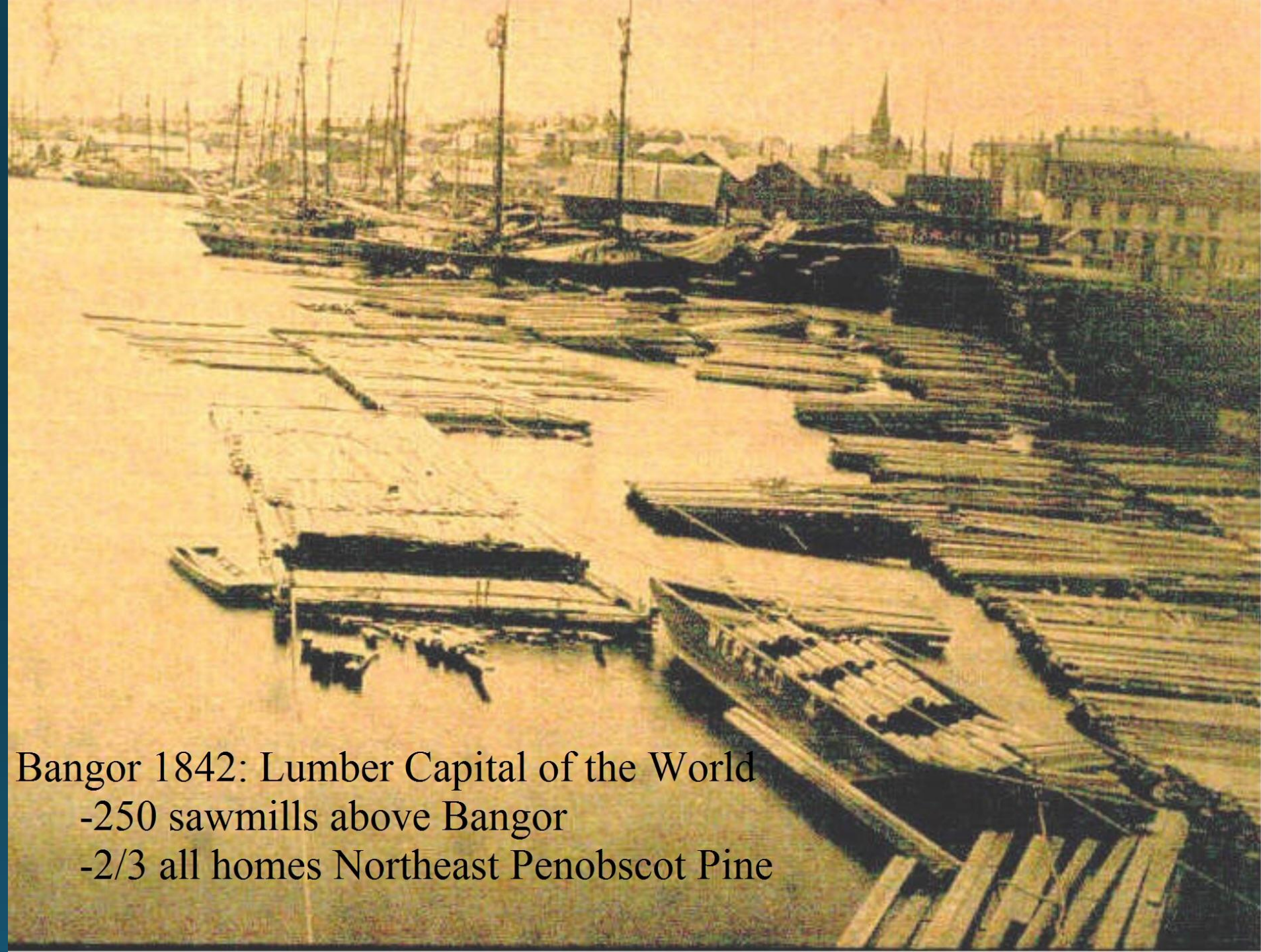


# 4. Construction Lumber Production



Rivers  
Water Power  
Forests  
Seaports

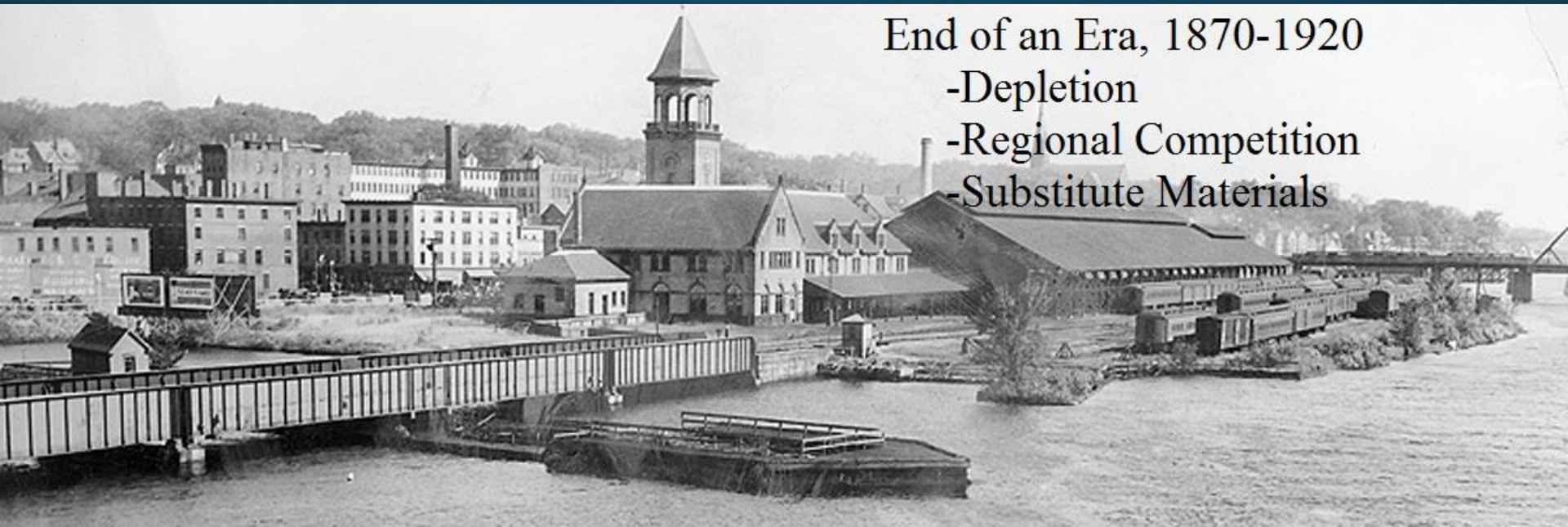




Bangor 1842: Lumber Capital of the World  
-250 sawmills above Bangor  
-2/3 all homes Northeast Penobscot Pine







End of an Era, 1870-1920

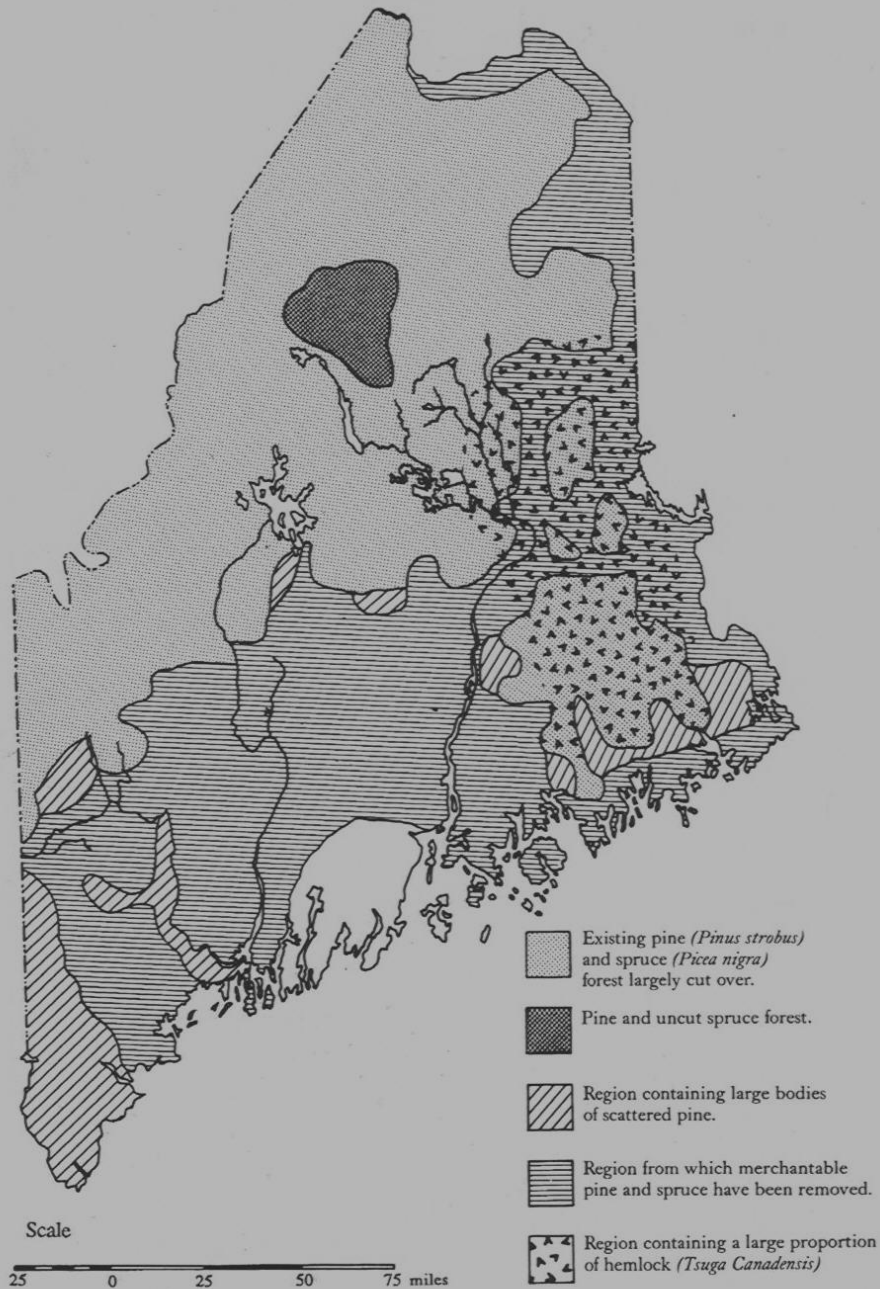
-Depletion

-Regional Competition

-Substitute Materials

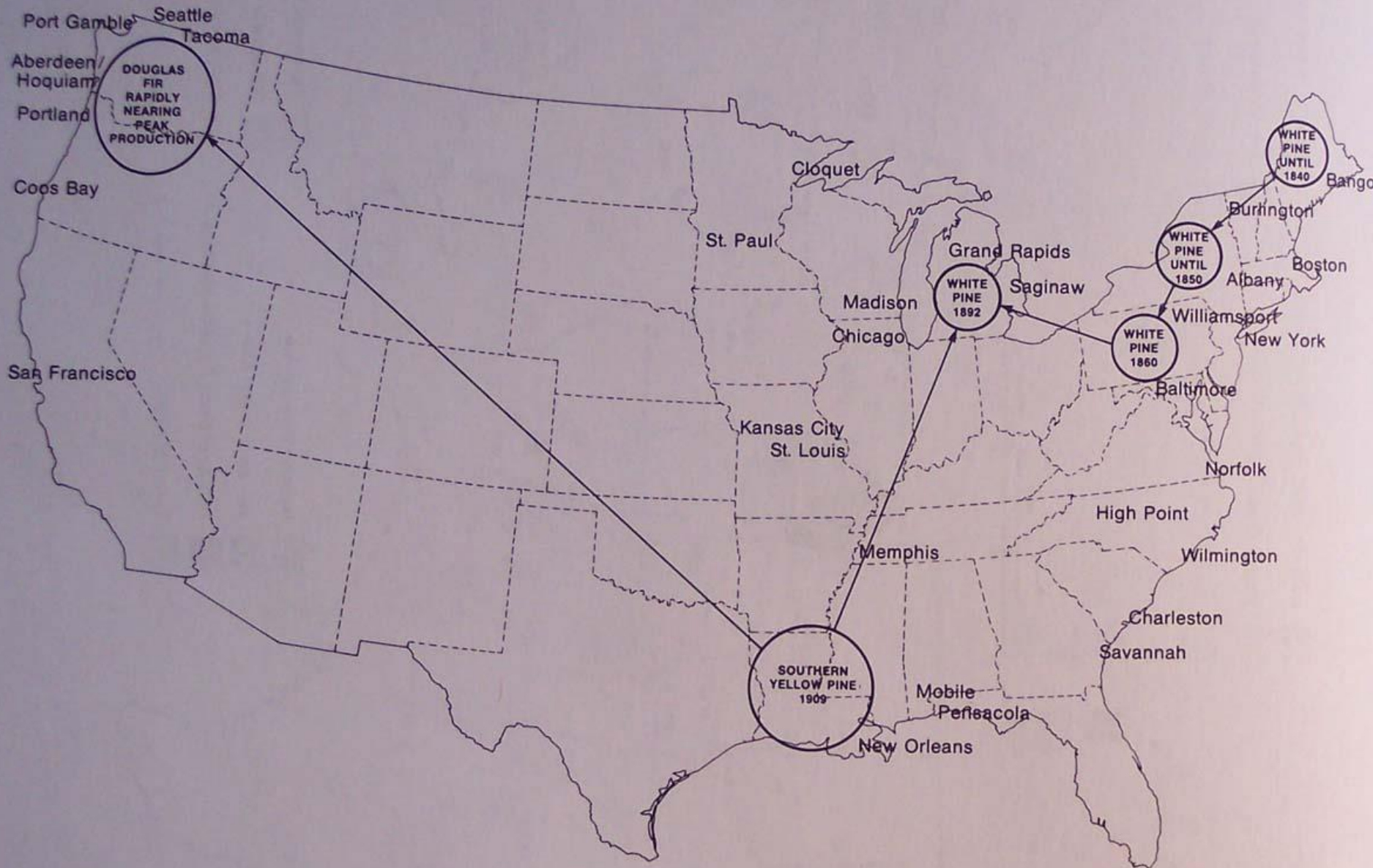






This map shows the composition of the Maine forest in the latter half of the nineteenth century. (Source: U. S. Bureau of the Census, TENTH CENSUS, "Forests of the United States.")

MAP 17. Peaks of Lumber Production and Major Lumber Centers, 1923.





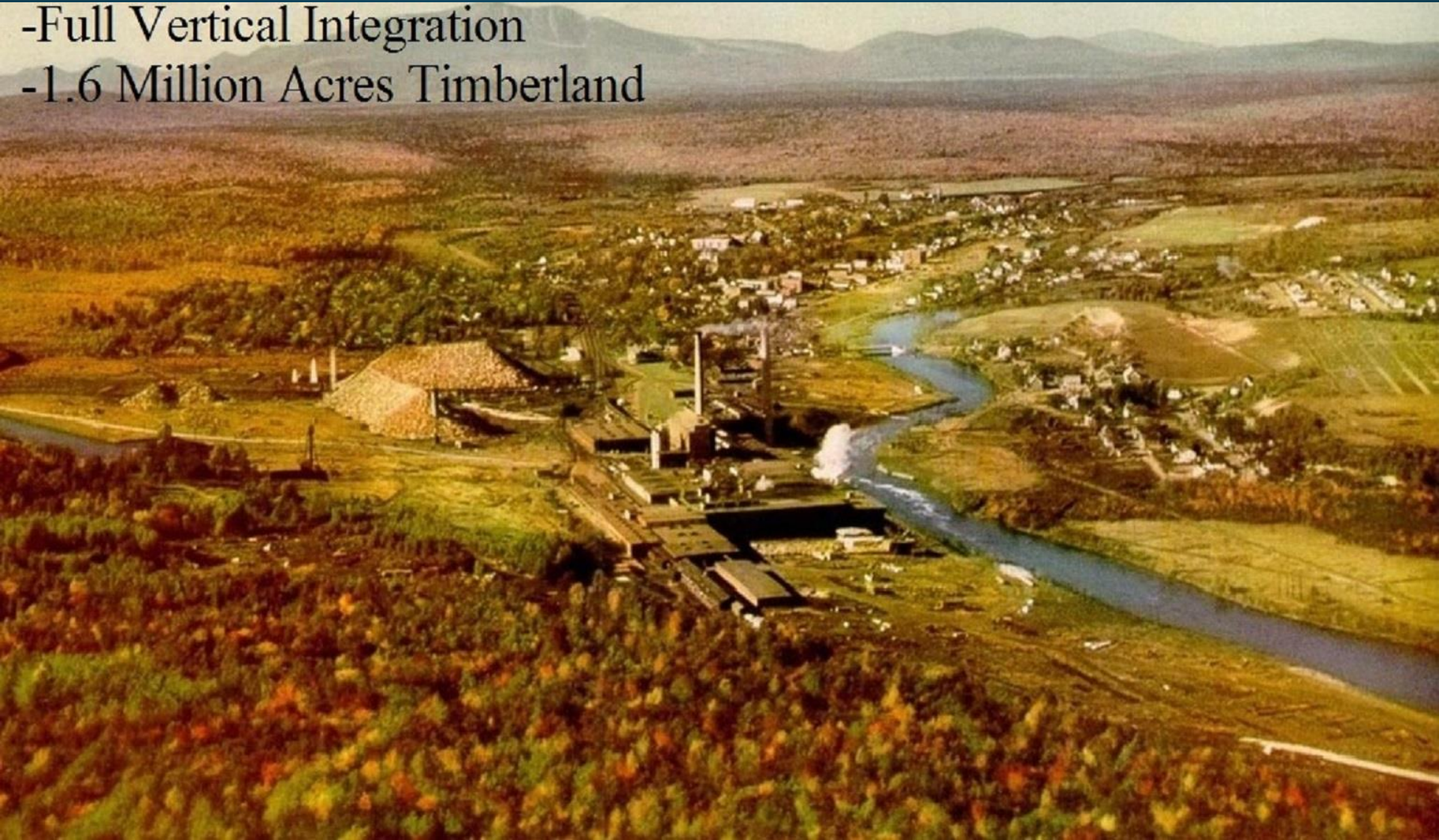








-Full Vertical Integration  
-1.6 Million Acres Timberland

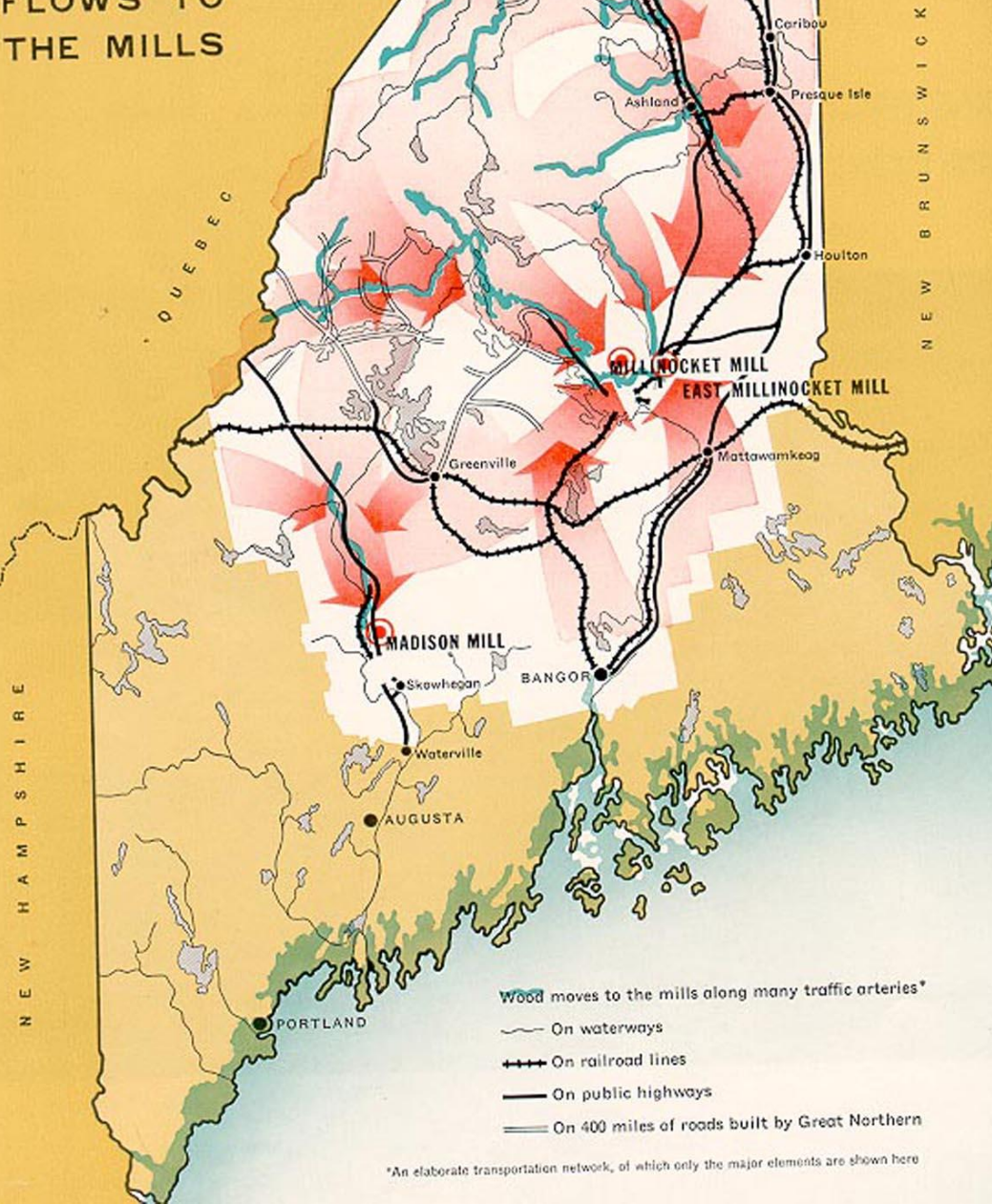




750 BIPOCENU DAM,  
750 FT LONG, 65 FT HIGH, 35 FT WIDE  
THICK LARGEST IN U.S.

130

# HOW THE WOOD FLOWS TO THE MILLS



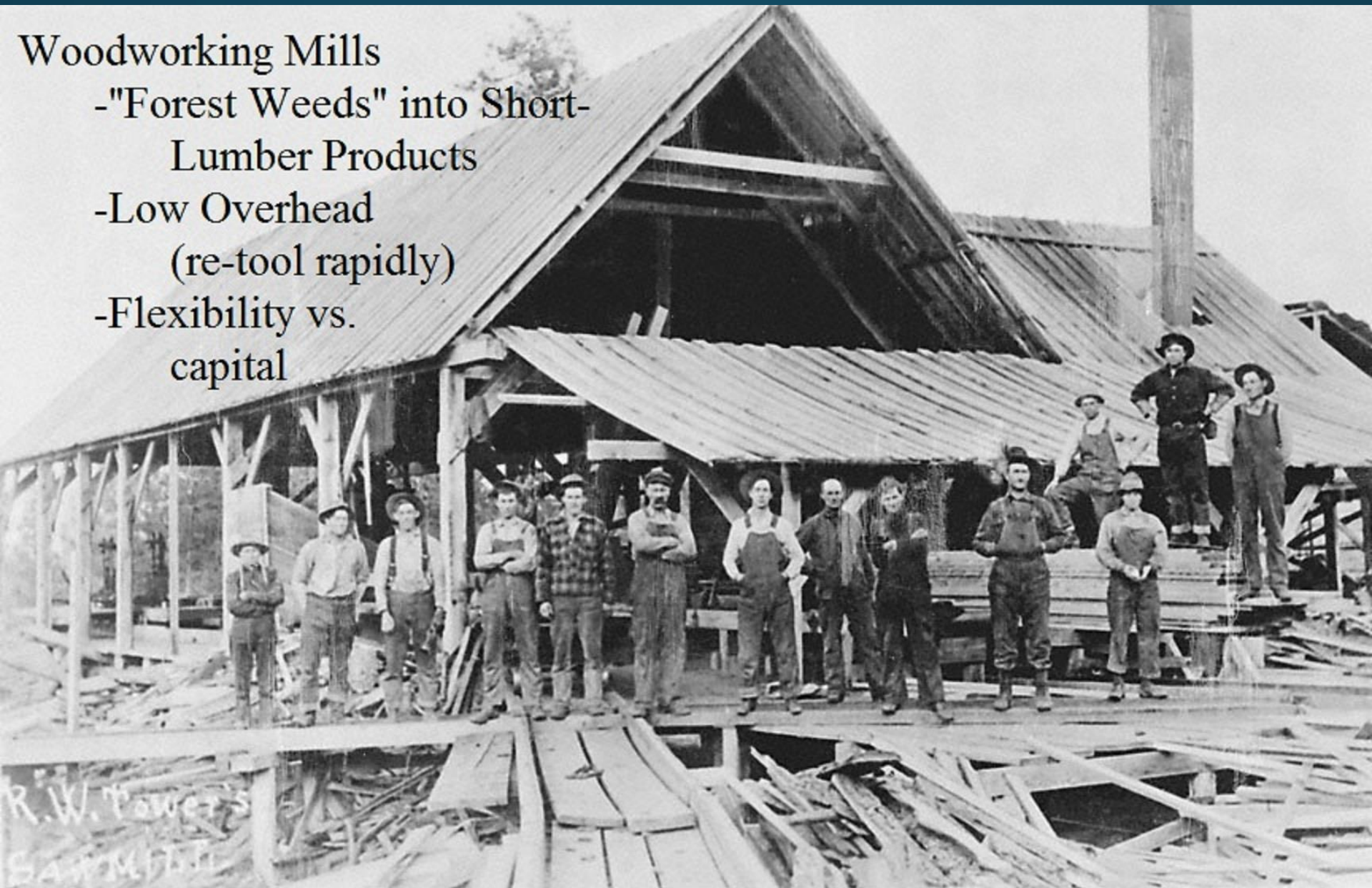
\*An elaborate transportation network, of which only the major elements are shown here

Portable Sawmills  
-Second-Growth Pine  
-Match Blocks  
-Box Boards



## Woodworking Mills

- "Forest Weeds" into Short-Lumber Products
- Low Overhead  
(re-tool rapidly)
- Flexibility vs. capital

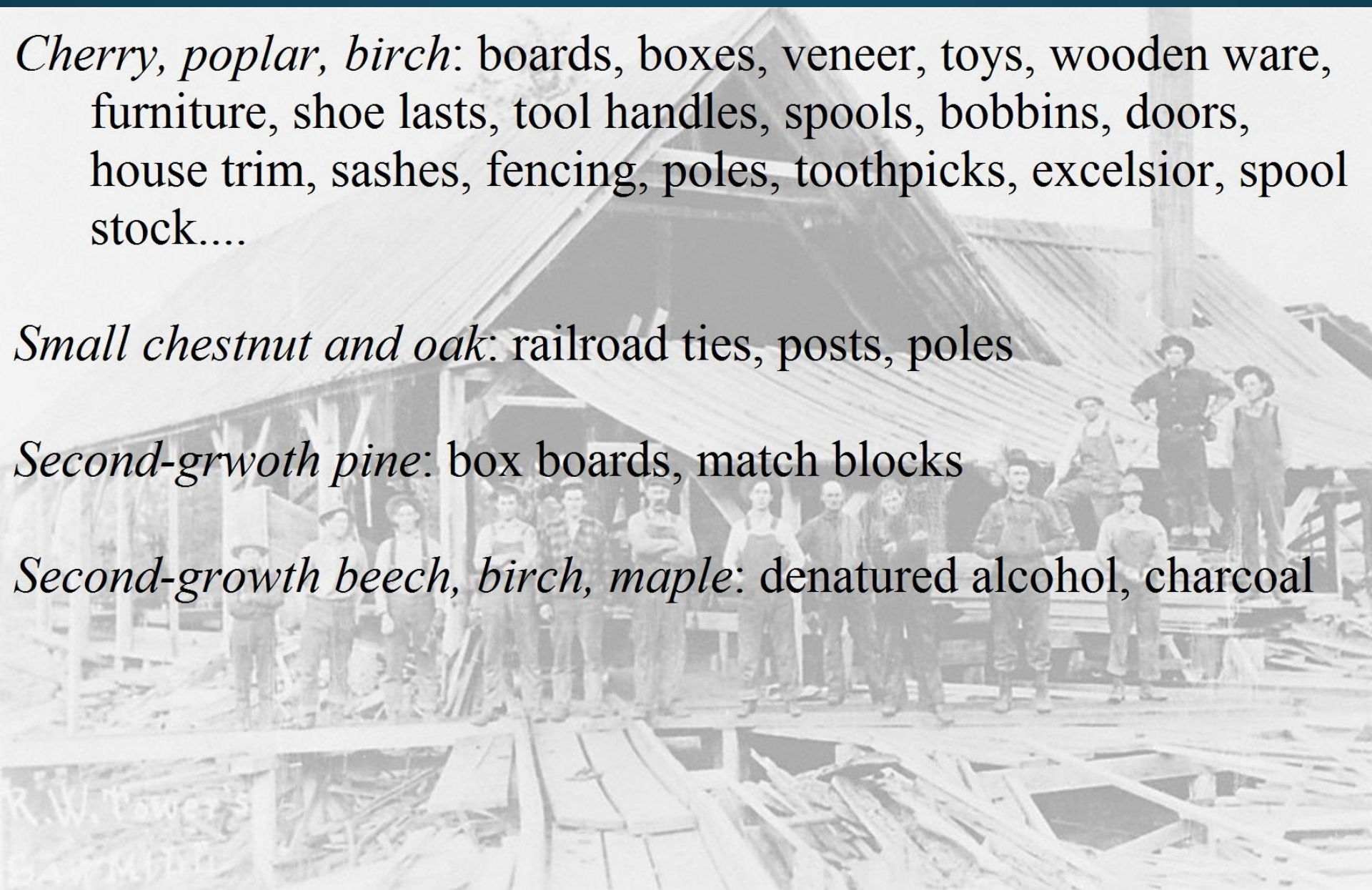


*Cherry, poplar, birch:* boards, boxes, veneer, toys, wooden ware, furniture, shoe lasts, tool handles, spools, bobbins, doors, house trim, sashes, fencing, poles, toothpicks, excelsior, spool stock....

*Small chestnut and oak:* railroad ties, posts, poles

*Second-growth pine:* box boards, match blocks

*Second-growth beech, birch, maple:* denatured alcohol, charcoal



## The shrinking paper industry

Maine's paper companies employed more than 5,700 people in 2011. With Madison's impending closure, the industry will have lost more than 2,300 jobs in five years.



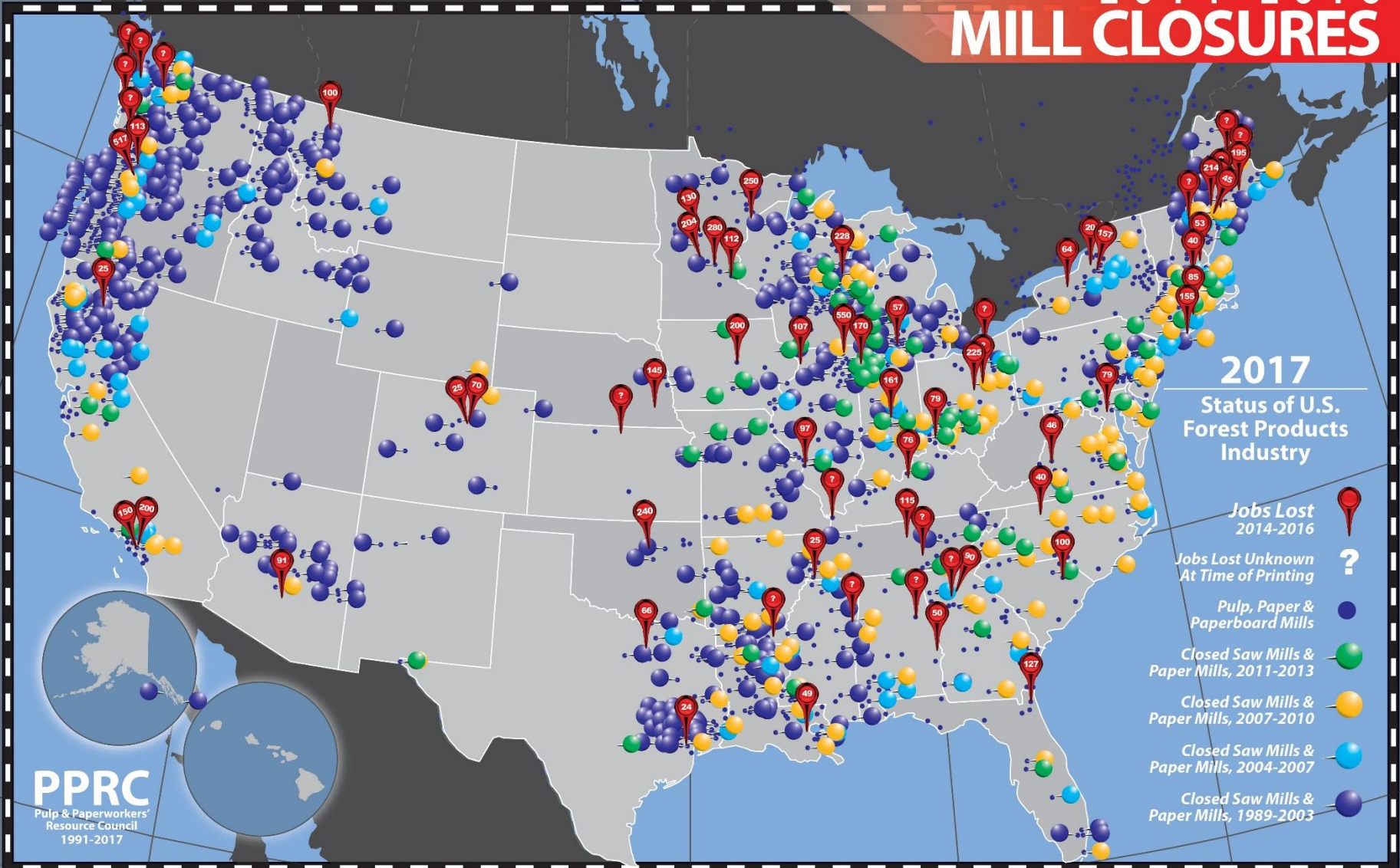
- |  |  |
|--|--|
| <p><b>1</b> Twin Rivers Paper Co.<br/>Madawaska<br/>Employees: 635</p> <p><b>2</b> Great Northern Paper Co.<br/>East Millinocket<br/>Employees: 200</p> <p><b>3</b> Lincoln Paper &amp; Tissue LLC<br/>Lincoln<br/>Employees: 170</p> <p><b>4</b> Woodland Pulp LLC<br/>Baileyville<br/>Employees: 308</p> <p><b>5</b> Old Town Fuel &amp; Fiber<br/>Old Town<br/>Employees: 200</p> | <p><b>6</b> Catalyst Paper<br/>Rumford<br/>Employees: 500</p> <p><b>7</b> Verso Paper Corp.<br/>Jay<br/>Employees: 600</p> <p><b>8</b> Bucksport<br/>Employees: 500</p> <p><b>9</b> UPM Madison (to close in May)<br/>Madison<br/>Employees: 214</p> <p><b>10</b> Sappi Fine Paper North America<br/>Skowhegan/<br/>Employees: 770</p> <p><b>11</b> Westbrook<br/>Employees: 320</p> |
|--|--|

SOURCE: Maine Department of Labor, Center for Workforce Research and Information 2011

STAFF GRAPHIC | MICHAEL FISHER



# 2014 - 2016 MILL CLOSURES



**PPRC**  
Pulp & Paperworkers'  
Resource Council  
1991-2017

# 2017 Status of Worldwide Mills\*

 **Existing Mills**  
-Pulp, Paper & Paperboard Mills

## 2014 - 2017 MILL CLOSURES



**2017**  
Status of U.S.  
Forest Products  
Industry

Jobs Lost  
2014-2016

Jobs Lost Unknown  
At Time of Printing



China\*  
[ 687 Mills ]



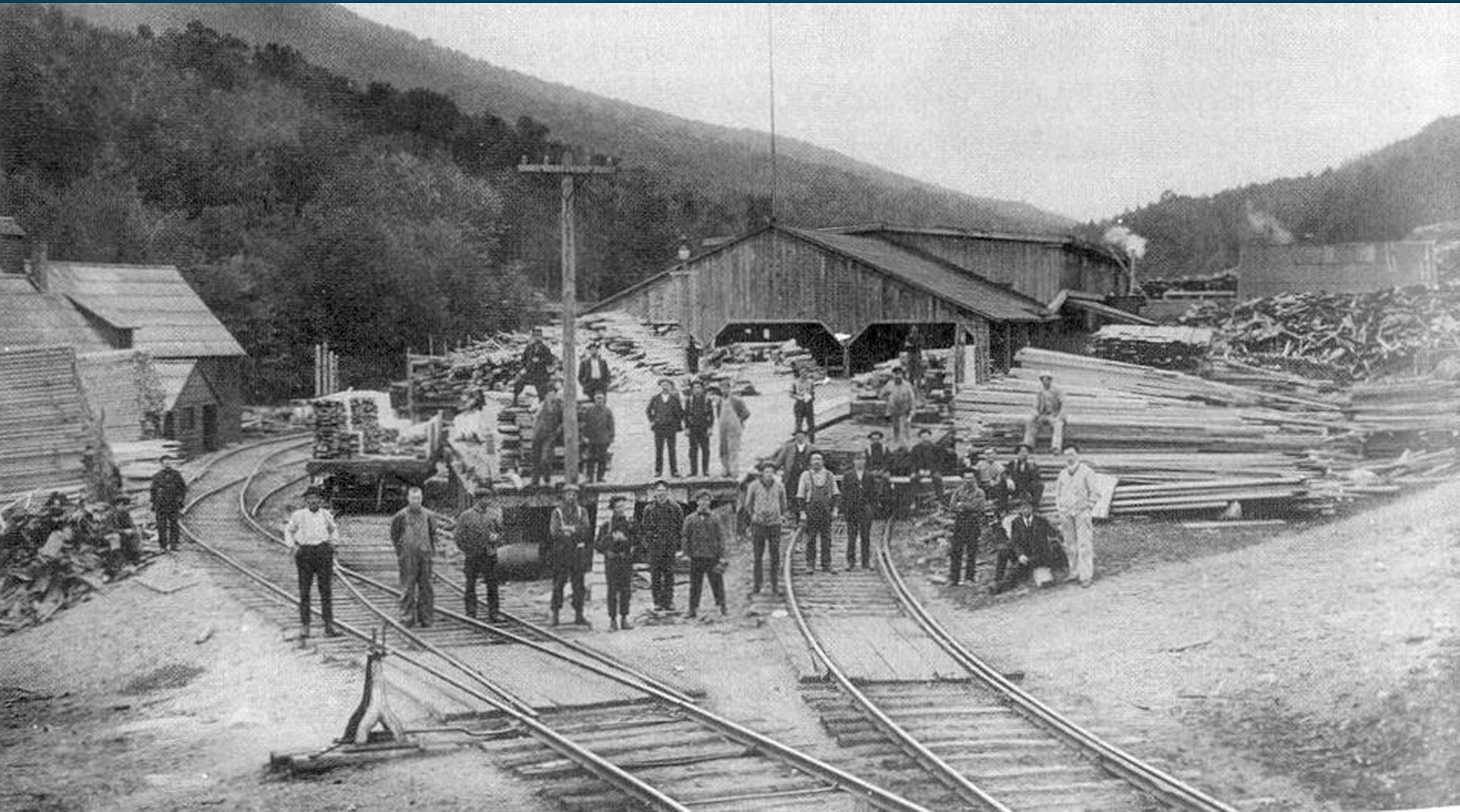
\*As of March 2010

However, in August 2010, China's Ministry of Industry and Information Technology had ordered to close over 200 antiquated and outdated paper companies to help comply with climate change concerns.

# Final Thoughts.....

1. The Northern Forest industries have been incredibly dynamic
2. New England's 40 million timberland acres have been used continuously for 400 years
3. Forest use becomes more intensive with each new phase
4. Culturally speaking, forest use have become increasingly fragmented

# Future of the Northern Forest ?



**Pulpwood Products?**

**Lumber?**

**Value Added Forest Products?**

**Culture – Nature-based Tourism?**

**Second-Home Development?**

**Forest Residuals?**

