

What is a tree?



NER.COFE 2017

PROPERTIES OF WOOD-BASED COMPOSITES

Dr. Stephen Shaler
Director, School of Forest Resources
March 13, 2017

OBJECTIVES

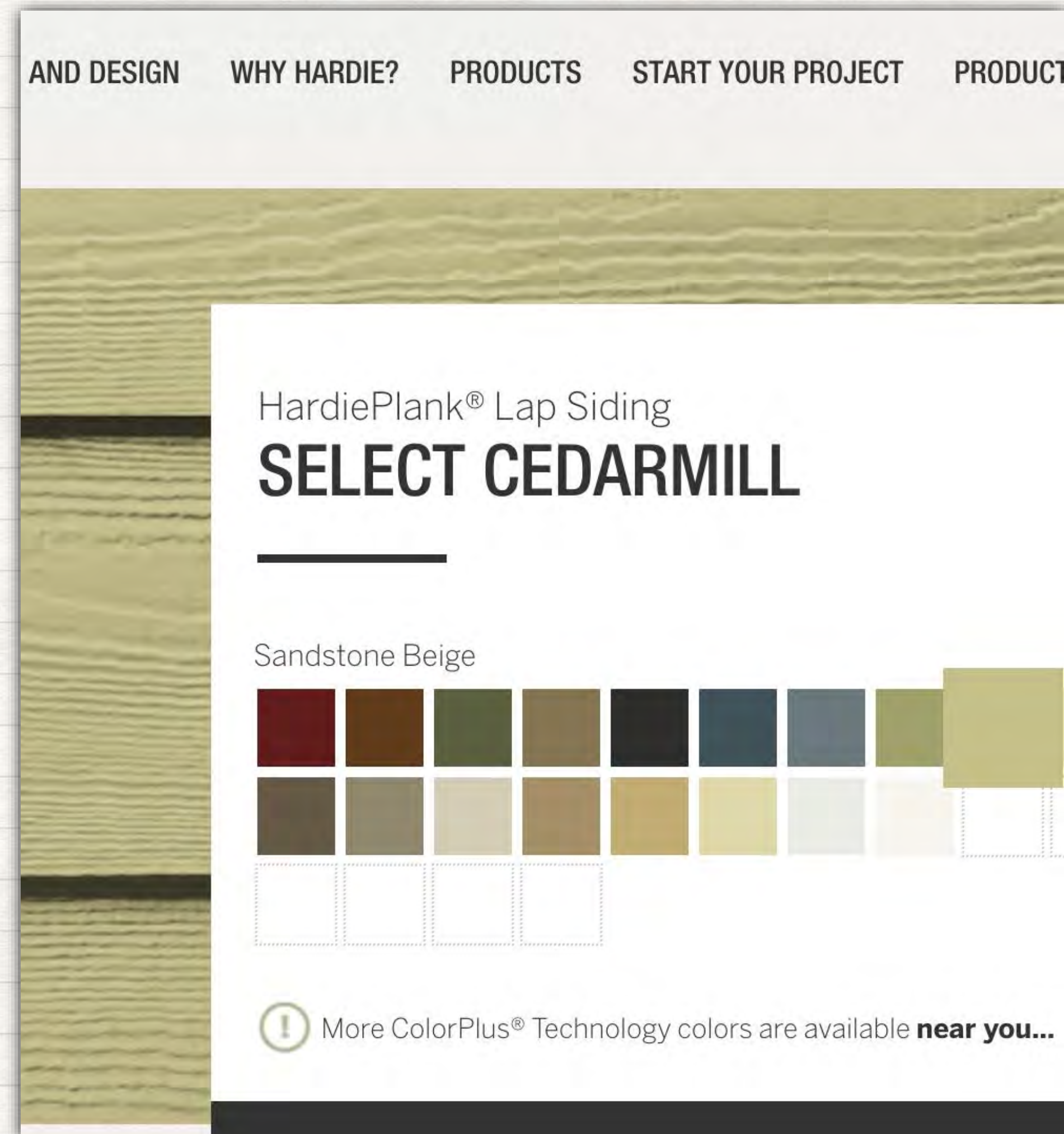
- Overview of wood-based composites produced - with focus on facilities in Maine and the region
- Develop understanding of resources needs for different wood-based composites
- A look ahead at new wood-based composites



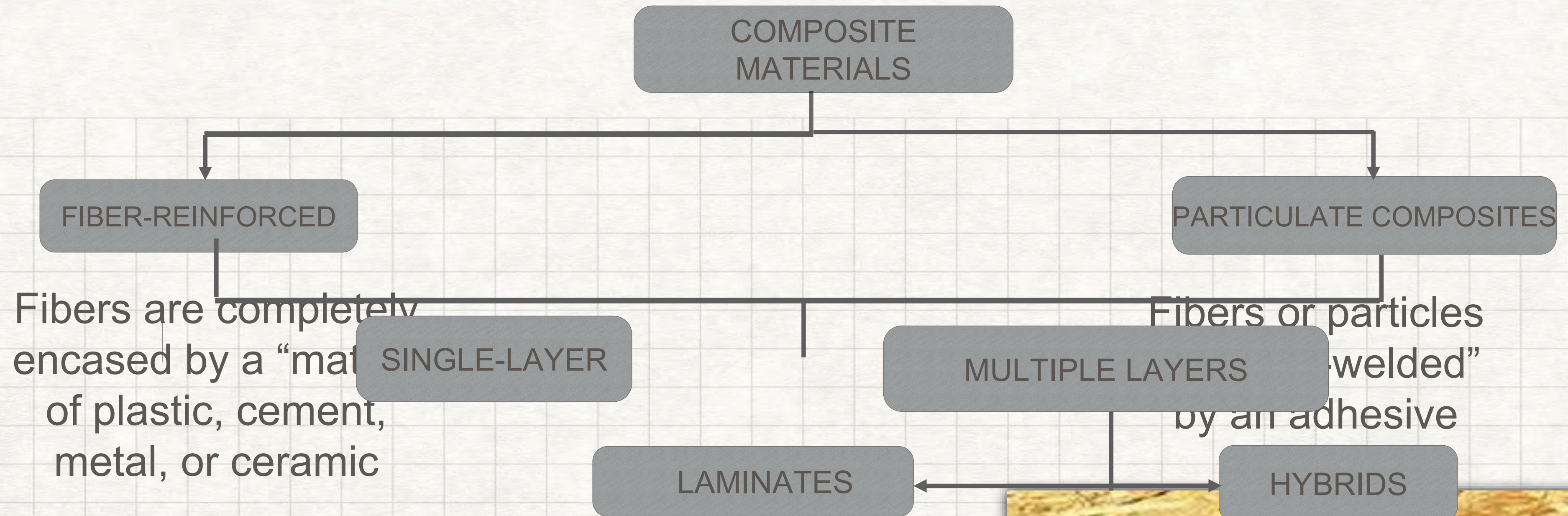
11 0

WHAT IS A COMPOSITE?

- A composite material is comprised of two or more distinct materials joined together which exhibit properties superior to either of the materials used alone.
- Increased range of sizes and forms relative to base materials.



CLASSIFICATION OF COMPOSITE MATERIALS



Fibers are completely encased by a "matrix" of plastic, cement, metal, or ceramic

Fibers or particles "welded" by an adhesive



Glu-laminated Beams

JamesHardie

COLOR AND

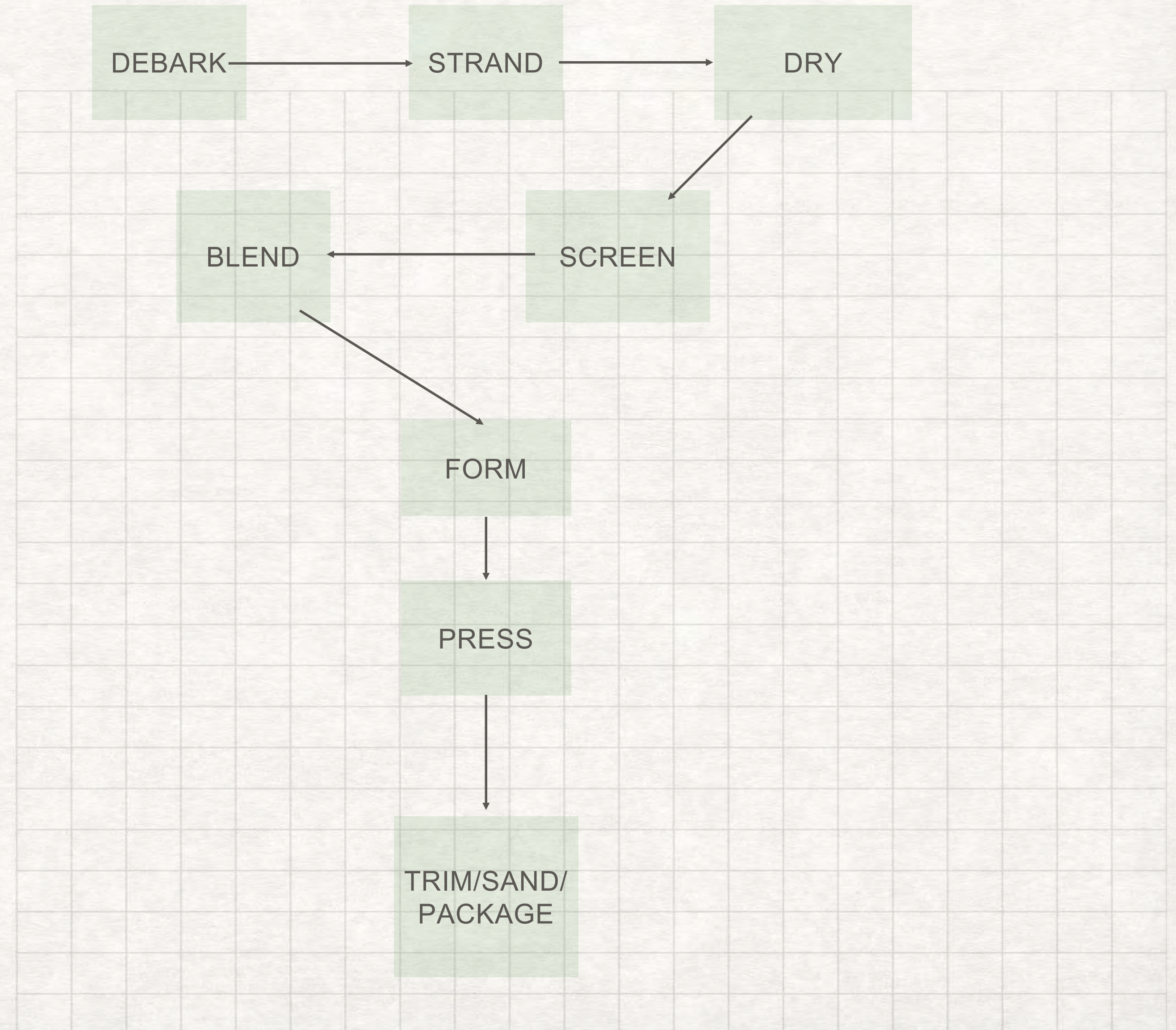


Structural Insulated Panels (SIP)



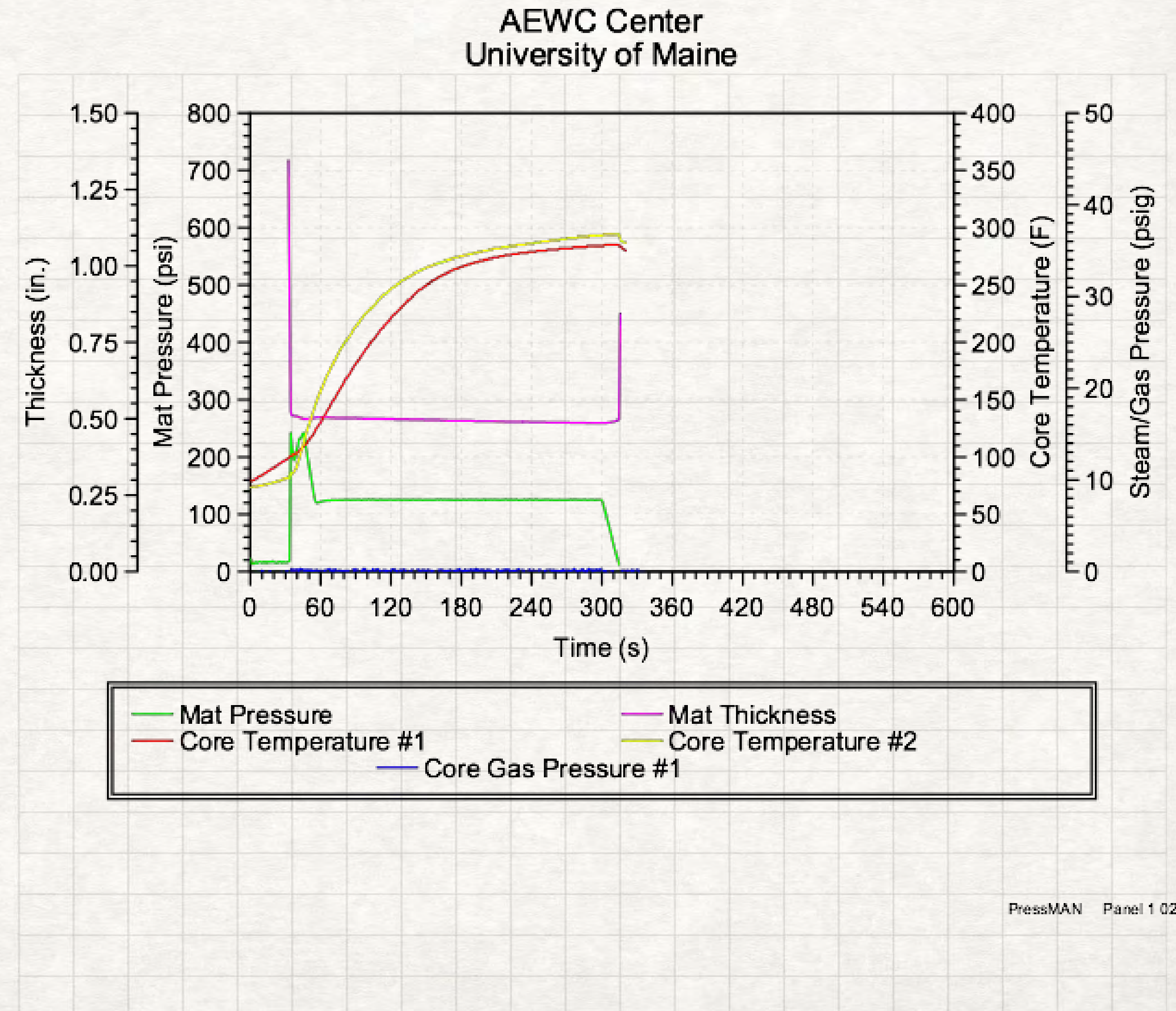
HOW ARE COMPOSITES MADE?

- **No bark is good bark**
- Make smaller sized “particles” from a tree (veneer, particles, lumber, fibers, ...)
- Remove moisture
- Add adhesive, other chemicals
- Press composite (typically) with heat and pressure to densify final product



HOW ARE COMPOSITES MADE?

- Adhesives are typically **thermoset**.
- Polymers in WPC are typically **thermoplastic**.



COMPOSITES CAN USE

- High quality logs
- Low quality logs
- Pulpwood
- Softwoods
- Hardwoods
- Mill residue
- **No bark is good bark**

| Veneer | Lumber |
|-------------------|--------|
| 1/8", 3/16", 1/4" | 2" x |

| Particle | Length | Slenderness Ratio |
|------------|-------------|-------------------|
| Wood Fiber | 1-3 mm | ~ 100 |
| Wood Flour | -40/+60 | 4-6 |
| Strands | 4 - 13 inch | 50 -> 300 |

STRUCTURAL WOOD-BASED COMPOSITES

- Glulam
- I-Joist
- OSB
- Plywood
- Rimboard
- Structural Composite Lumber (SCL)
- Cross-Laminated Timber (CLT)



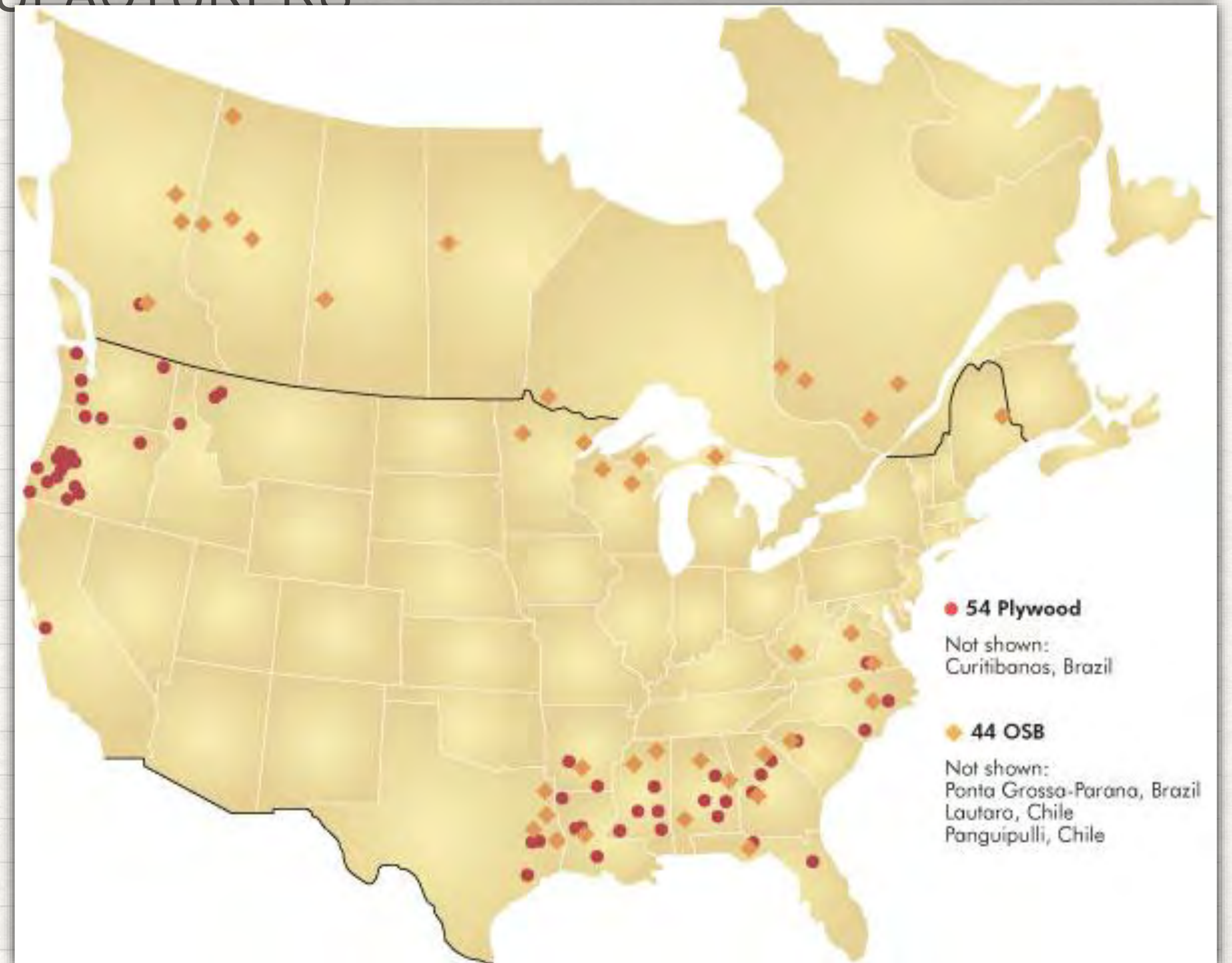
INTERIOR WOOD-BASED COMPOSITES

- Particleboard
- Medium Density Fiberboard (MDF)
- Hardboard
- Engineered Wood Siding and Trim
- Decorative Surfaces



WOOD BASED COMPOSITES MANUFACTURERS

- JM Huber - OSB @ Easton, ME
- LP Building Products - OSB & LSL @ Limerick, ME
- DuraLife - WPC @ Biddeford, ME
- Columbia Forest Products - Veneer @ Presque Isle, ME
- Moosewood Millworks - Laminated Flooring @ Ashland, ME
- Arauco - Particleboard @ St. Stephen, NB
- Foard Panels - SIP - West Chesterfield, NH



Midrise Wood Frame Construction in Canada: the Journey...

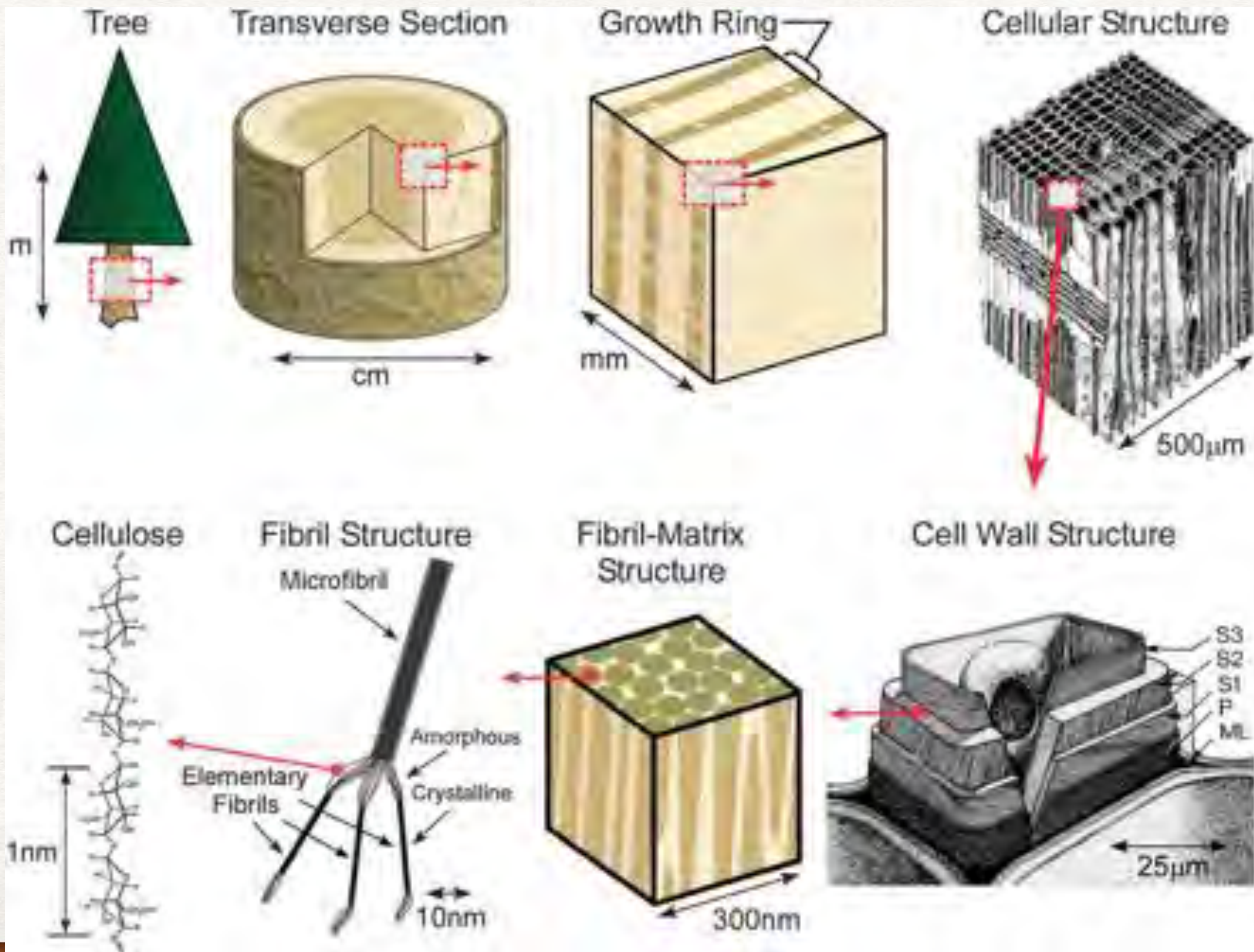
- 2009: BC Building Code revised to increase height limit for wood-frame construction from 4 to 6 storeys
- 2013: Régie du Bâtiment du Québec (RBQ)
- 2015: Ontario Building Code
- 2015: Alberta Building Code
- 2015 National Building Code of Canada



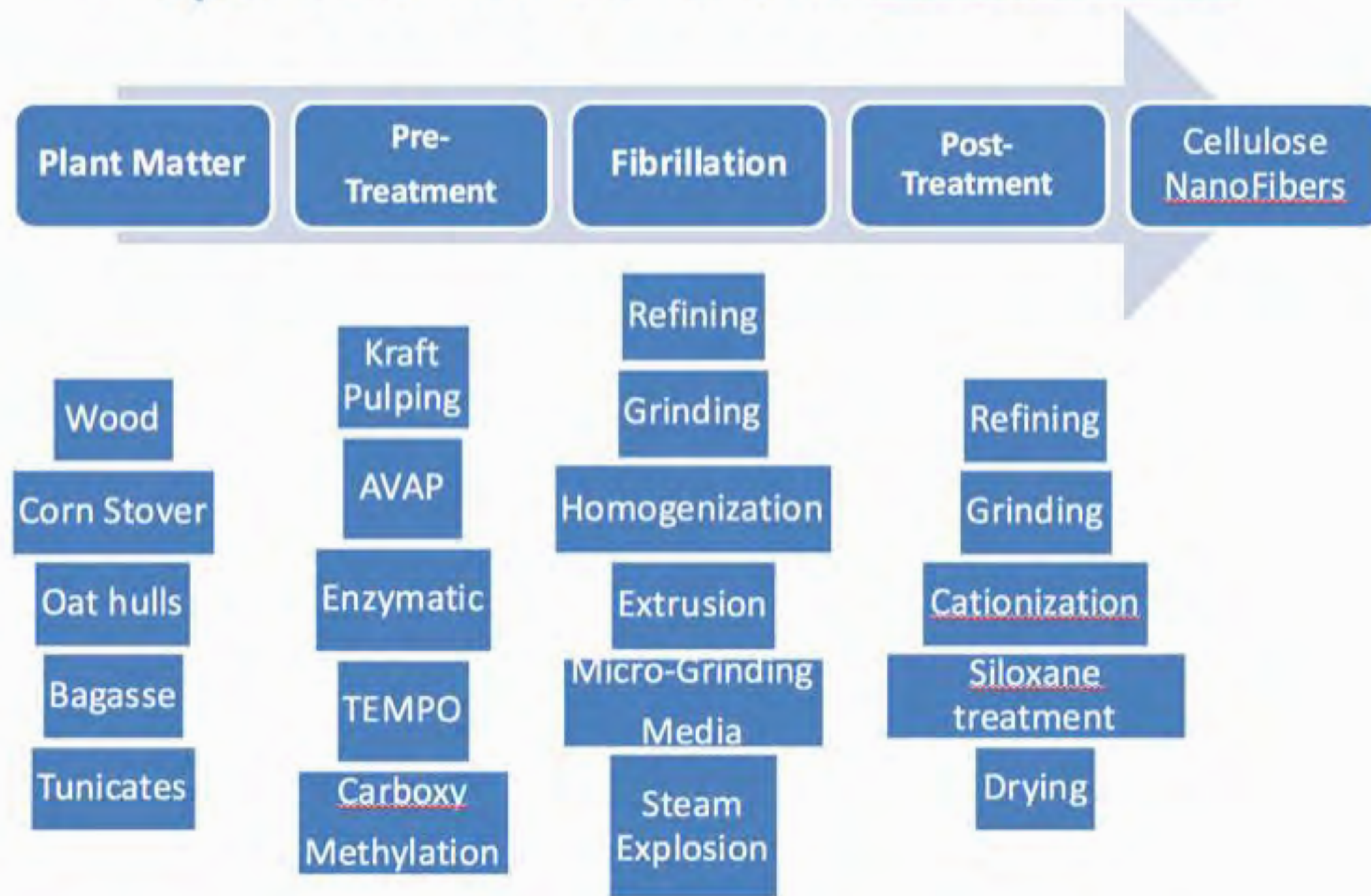
Expecting 1000's of midrise buildings in Canada next few years!!

EMERGING COMPOSITES

NANOCELLULOSE AS THE PARTICLE



Preparation of Cellulose NanoFibrils



Cellulose Nanofibrils (CNF)

Capacity 2015

(kg/day)

| | |
|--|----------------|
| Paperlogic, USA | 2,000 |
| University of Maine, USA | 1,000 |
| Borregaard, Norway | 1,000 |
| American Process | 500 |
| Nippon Paper, Japan | 150 |
| Innventia, Sweden | 100 |
| NamiCell, France | 100 |
| Oji Paper, Japan | 100 |
| Stora Enso, Finland | Pre-commercial |
| UPM, Finland | Pre-commercial |
| FPIinnovations, Canada | Pilot |
| Norske Skog | Pilot |
| Daicel, Japan | Lab |
| Luleå University of Technology, Sweden | Lab |
| US Forest Products Laboratory, USA | Lab |

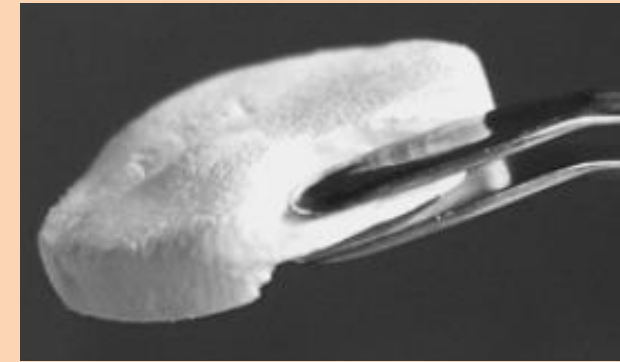
Additive Manufacturing

- Filaments
- Composites
- Powders
- ...



Foams

- Acoustic
- Structural
- Thermal
- ...

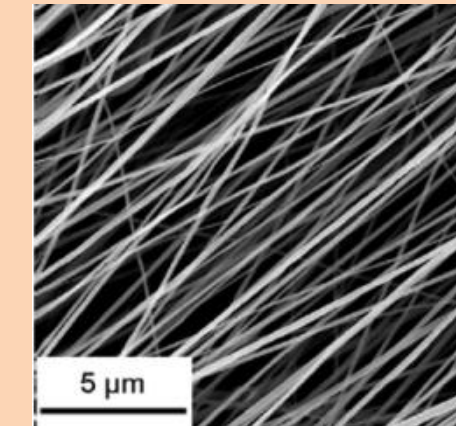


Paakko et al., Soft Matter, 2008

Melodea

Continuous Fibers

- Reinforcement
- Textiles
- Woven
- ...



Dong et al., 2012

Building Products

- Wallboard
- Sheathing
- Panels
- ...



Flexible Electronics

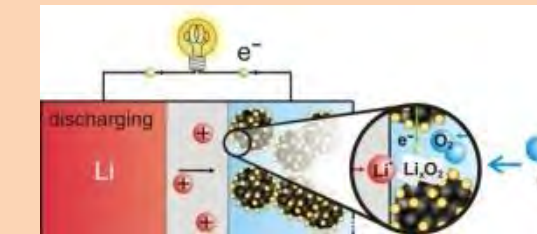
- Self Powered
- Display
- Solar
- LED
- ...



Yano et al.

Separators/Barrier

- Filtration
- Batteries
- Pumps
- ...



Rheology Modifier

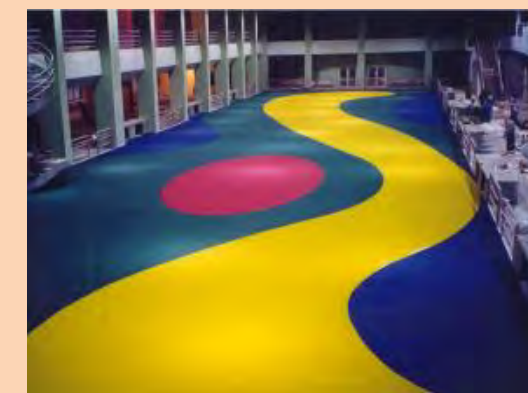
- Cosmetics
- Food
- Adhesives
- ...



Courtesy Dr. Robert Moon USFS

Coatings

- Epoxy resins
- Paints
- Sealants
- ...



Oil & Gas

- Drilling Muds
- Frac Fluids
- Clean-up
- ...

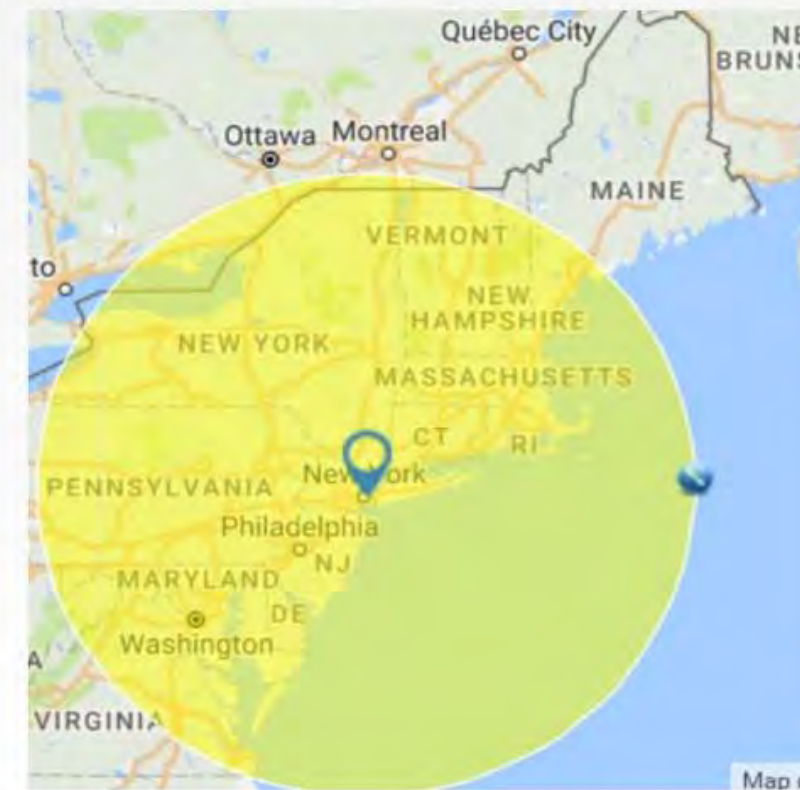


SUMMARY

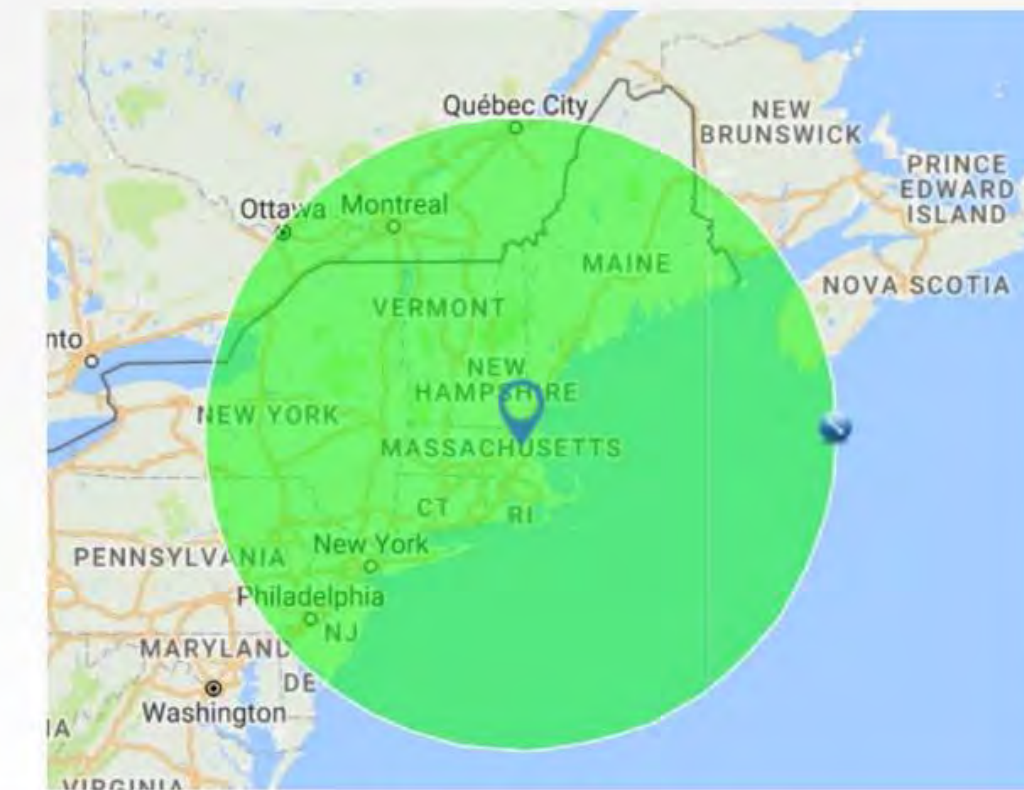
- Composites refer to a broad spectrum of materials, produced in a variety of ways, with a broad set of markets.
- Advantages include unique properties, wide variety of sizes and appearance, uniform behavior.
- Relatively low amount of composite production in Maine relative to other regions of North America (?resource driven?)

Mass Timber Opportunities in Maine

1. European Market has figured it out
2. Plentiful SPF #2 or better stock
3. Existing Value Chain – Logging, Processing, lumber
4. Location - LEED



500 miles New York



500 miles Boston

