



New England Regional Council on Forest Engineering

TallTimber & TimberPad: Software and Support for Forest Inventory

Timberpad Pro 2.0

Setup Tally Tools

Plot-Tree 1-1

Plot+ Tree+ TD+ DEL

Species DBH Product Tree Notes

0-tally 5.0 7 Winter road

Plot	Tree	SPP	DBH	Product	Reps
1	1	0-tally	5.0	7	1
2	1	WP	22.0	222225555	1
2	2	HE	17.0	2255555	1
2	3	HM	18.0	223555	1
2	4	WP	8.0	666655	1

Reps 1

Timberpad Pro 2.0 © L.E. Caldwell, LLC, 2018

TallTimber Cruise Processor

BOARD FOOT VOLUME DISTRIBUTION

STAND AND BOARD FOOT STOCKING ESTIMATES

MERCH. CORDS DISTRIBUTION BY TYPE, STRATA, OR STATE

TALLTIMBER® Reports

International 1/4" Rule

2" DBH Class	Type/Stand Total	Per Acre	Number of Trees	Board Foot Volume*	Per Acre
8	40,042	84.5	0	0	1
8	48,723	70.0	18,325	18,325	2
10	34,840	55.7	154,213	154,213	5
12	21,790	34.8	87,211	87,211	8
14	12,497	20.8	45,192	45,192	10
16	8,297	13.5	31,760	31,760	12
18	2,488	4.0	9,571	9,571	16
20	1,284	1.9	4,968	4,968	21

spp_order	Spp_Name	HW_SW	Quality	TPA_OvrStry	BA_OvrStry	Gross_Cords_Ac	Merch_Cords_Ac	Veneer_BF_Ac	Veneer_CF_Ac	Saw_BF_Ac	Saw_CF_Ac	Pallet_BF_Ac
1	Balsam fir	Softwood	A	8.12	2.65	0.53	0.00	0.00	0.00	144.16	27.49	
1	Balsam fir	Softwood	U	3.28	1.06	0.20	0.00	0.00	0.00	7.59	2.11	
3	Hemlock	Softwood	A	2.21	0.71	0.10	0.00	0.00	0.00	16.37	2.96	
3	Hemlock	Softwood	U	1.91	0.71	0.09	0.00	0.00	0.00	0.00	0.00	
7	Red spruce	Softwood	A	1.48	1.41	0.39	0.00	0.00	0.00	158.71	26.89	

TALLTIMBER® 3.0

Timber Cruise Processor

START

1. Import Data
2. Enter Input Parameters
3. Check Input Success
4. Process, Get Results
5. Growth

Codes About

Quit

Learn more at: www.ttimber.com

3/12/2018



What are we talking about?

Timber cruising:

Collecting forest inventory data to end up with estimates on a stand or collection of forest stands, a forest.



How this presentation will flow:

1. Timberpad Pro software, what it looks like, how it works
2. TallTimber software, what it looks like, how it works
3. Explanation of how support is setup
4. Question and answer period
5. We will be at our table in Room #3 for another hour;
Come try out TimberPad Pro on a range of devices!



Timberpad Pro®: What is It?

- Data collection software: ***Timberpad Pro*** and ***Timberpad Demo***
- Works on Android, Apple, vintage Windows Mobile DEVICES
- Designed to provide optional tools from stump-to-spreadsheet
 - Keep track of cruise parameters by pre-loading plots and specifications
 - Flexible data collection with optional ‘incomplete’ warnings
 - Multiple methods of checking for incorrect, missing, or extra values and records in the field
 - Two data export options for TallTimber and spreadsheet analysis



Timberpad Pro®:

- Many features & flexibilities for solo & team cruising:
 - Share product specifications with your group from a distance
 - Variable-radius, fixed-radius, 100% tally
 - Collect heights, grades, or 8' multi-product sections
- Versatile tools to help collect and use your cruise:
 - Horizontal limiting distance automated
 - Cruise summary information available as you work
 - Take notes on unique trees, or use the Duplicate function to save time entering similar records



Timberpad Pro[©]: "Home" Images

Timberpad Pro 2.0

Setup Tally Tools

Project Name: MyWoodlot

Cruiser: JDP Stand/Strata: H3A Acres: 175.0

Plot + GPS EXIT TPad Current Plot-Tree: 5-1

Stocking Level: Well Stocked Plot Comment: Near ravine

Warnings On

Multi-Product Saw-Pulp

X-Coord. 44.306657 Y-Coord. -69.97018 +/- 5 m.

Timberpad Pro 2.0 ©, L.E. Caldwell, LLC, 2018

Timberpad Pro 2.0

Setup Tally Tools

<<< Plot-Tree 1-1 >>>

Plot+ Tree+ TD+ DEL

Species: 0-tally DBH: 5.0

Tree Duplicator Settings: Species DBH Product

Product: 7 Tree Notes: Winter road

Plot	Tree	SPP	DBH	Product	Reps
1	1	0-tally	5.0	7	1
2	1	WP	22.0	2222225555	1
2	2	HE	17.0	2255555	1
2	3	HM	18.0	223555	1
2	4	WP	8.0	666655	1

A U C L Reps: 1

Timberpad Pro 2.0 ©, L.E. Caldwell, LLC, 2018

Timberpad Pro 2.0

Setup Tally Tools

Limiting Distance Species Codes Products Specs

Export Import Delete

Checker TT Format Help

Current Unstratified Tally

Plots # 0-Tally # Trees BAF

Enter BAF and Click for Estimates

Click! sq.ft./ac TPA

Timberpad Pro 2.0 ©, L.E. Caldwell, LLC, 2018



Timberpad Pro[©]: "Tools" Images

Timberpad Pro 2.0

11:47 AM 93%

Limiting Distance Calculator

Clear Entries Back to Tally

Instructions: Follow steps 1-2-3-4 to get MAXIMUM DISTANCE IN FEET to still be ON THE PLOT (to pith of tree).

1. Choose BAF

2. Enter DBH

3. Enter Slope %

4. Calculate Distance (ft)

Answer (ft)

Timberpad Pro 2.0 ©, L.E. Caldwell, LLC, 2018

Mail LTE 11:57 AM 12%

Timberpad Pro 2.0

Species Codes

1	White pine	18	Tamarack
2	Hemlock	20	Other softwood
3	Red spruce	29	Norway spruce
4	Balsam fir	30	Pine(s)
5	Red pine	37	Black spruce
6	White cedar	38	White spruce
7	Sugar maple	25	Black walnut
8	Red maple	26	Chestnut oak
9	Paper birch	27	Cucumbertree
10	Yellow birch	28	Hickory(s)
11	Beech	31	Sassafras
12	Red oak	32	Scarlet oak
13	White oak	33	Sycamore
14	White ash	34	Yellow poplar
15	Aspen(s)	35	Dead
16	Blk cherry	36	Black ash
17	Basswood	39	Butternut
19	Other hardwd	40	Elm(s)
21	Black Birch	41	Balsam poplar
22	Black gum	42	Hophornbeam
23	Black locust	43	Shagbark hickory
24	Black oak		

Timberpad Pro 2.0 ©, L.E. Caldwell, LLC, 2018

Timberpad Pro 2.0

11:46 AM 93%

Species/Size/Length Specs
(not used internally by TPad)

Export Specs Import Specs

Back to Tally Erase All

Veneer (code 1)
Hardwood only, 14" min DBH, 4 clears, straight, sound
No poplar

Sawlog (code 2)
SF, 7" DBH min, 5" top, straight, sound
WP, 9" DBH min, 7" top, free of excessive limbs, mostly sound
OS, 11" DBH min, 10" top, straight, sound
HWD, 11" DBH min, 10" top, 2 clears, >75% sound

Tie/Pallet (code 3)
HWD, 11" DBH min, 10" top, straight, sound
No poplar

Bolt/Peeler (code 4)
WB, YB, HM only: 8" DBH to 7" top, 3 clears

Pulp (code 5)
Too rough to meet quality specs, >= 50% sound



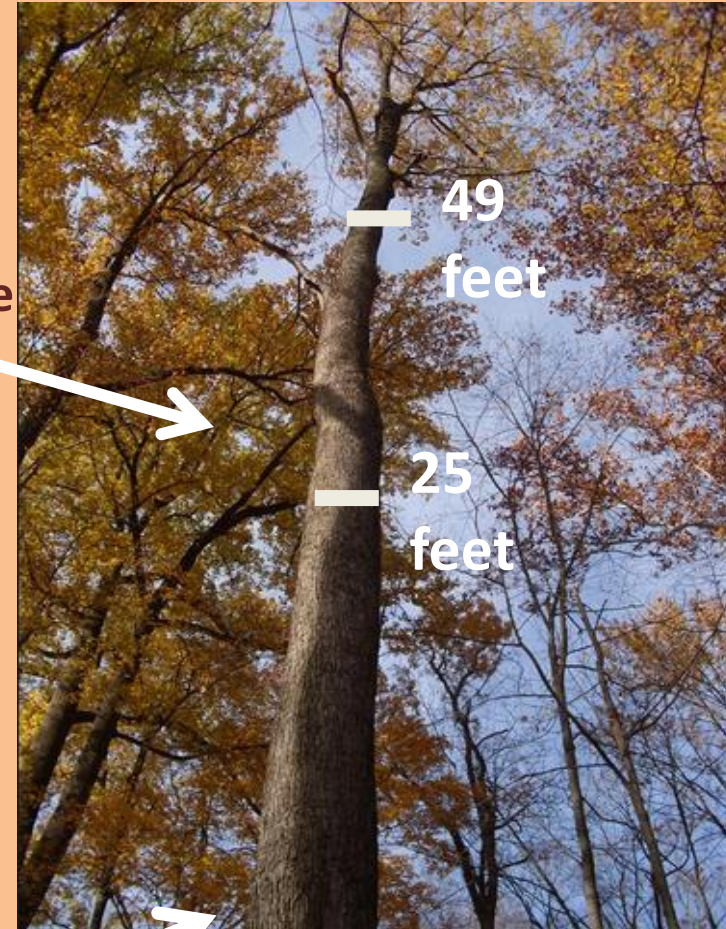
Product, Height, Grade Collection:



Saw-Pulp
Height Mode
25 49

122355
Multiproduct
Mode

Acceptable
Growing
Stock





TallTimber®: What is It?

- Cruise processing and forest growth integration software
 - Runs on MS Access Runtime (free!) or regular MS Access
 - Develop your cruise, grow with FVS, print off customized report
 - Has flash drive that is required, but installable on multiple computers
- Developed over 12-year period, has free demo version
 - Millions of acres of timberland processed; small woodlot to million-acre ownerships
 - Approximately \$1 billion in timberland transactions
 - Released 2017, user group help, foresters in at least 6 states currently



TallTimber[®]: Interface Images

TALLTIMBER[®] 3.0

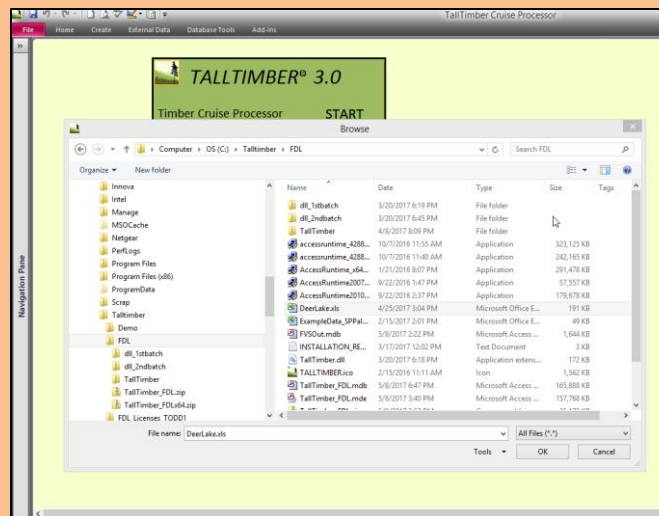
Timber Cruise Processor

START

1. **Import Data**
2. **Enter Input Parameters**
3. **Check Input Success**
4. **Process, Get Results**
5. **Growth**

[Codes](#) [About](#)

[Quit](#)



TALLTIMBER[®] Inputs

1. **Prism BAF or Plot Size (required):** [Click to Select](#)
2. **Species Codes, Taper, Weight, and Sorting :** [Click to Select](#)
3. **Regeneration/Merchantability Setting:** [Click to Select](#)
4. **Cubic Foot Per Cord Setting:** [Click to Select](#)
5. **Board Foot Merchandizing :**
Log Length Preference [?](#)
 8' always 16' if possible
6. **Cubic Foot Volume Equation (Smalian default):**
Cubic Volume Equation [?](#)
 Huber
 Newton
 Smalian

[Return to Start](#)



TallTimber[©]: Some Details

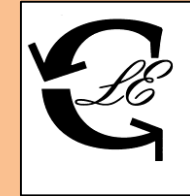
- Fast & flexible inputs – customization is strictly optional!
 - Cruises covered: Variable radius, fixed radius, 100% tally
 - Process heights or 8' multi-product sections
 - Customize your inputs (species codes, tons/cord, merchantability size, etc.)
- Choose your output: Individual or combined report modes
 - Spreadsheet-ready tables for extra analysis or exporting/sharing
 - 58 predesigned reports and charts compiled in any combination you like
 - Includes in-depth analysis data such as: Product volume by diameter, Saw height/length, and Cruise statistics



TallTimber[©]: Make Your Work Look Good



Professionalize your cover page to make your work stand out



- Easily add a photo of your stand or forest
- Quickly add your business logo to cover page when doing client work

The screenshot displays the TallTimber software interface with several reports open:

- BOARD FOOT VOLUME DISTRIBUTION**: A bar chart showing volume distribution by species and size class.
- STAND AND BOARD FOOT STOCKING ESTIMATES**: A table showing estimates for different tree classes.
- MERCH. CORDS DISTRIBUTION BY TYPE, STA...**: A pie chart showing the distribution of merchantable cords by species.
- TALLTIMBER Reports**: A central menu with options like 'Per Acre Volume Reports at Strata', 'Type or Stand Stat Report with All Species', etc.
- Table of Species Data**: A table with columns for species name, quality, and various volume metrics.

spp_order	Spp_Name	HW_SW	Quality	TPA_OvrStry	BA_OvrStry	Gross_Cords_Ac	Merch_Cords_Ac	Veneer_BF_Ac	Veneer_CF_Ac	Saw_BF_Ac	Saw_CF_Ac	Pallet_BF_Ac
1	Balsam fir	Softwood	A			8.12	2.65	0.53	0.00	144.16	27.49	
1	Balsam fir	Softwood	U			3.28	1.06	0.20	0.00	7.59	2.11	
3	Hemlock	Softwood	A			2.21	0.71	0.10	0.00	16.37	2.96	
3	Hemlock	Softwood	U			1.91	0.71	0.09	0.00	0.00	0.00	
7	Red spruce	Softwood	A			1.48	1.41	0.39	0.00	158.71	26.89	



TallTimber-2-FVS Feature

- FVS growth modeling expedited, now within easy reach
 - Per-acre growth estimates, by stand/strata, can be generated in under 5-minutes with practice!
 - FVS output is calibrated to your inventory volumes, not national standards required by the USFS
 - Input file building effort is reduced by 90%!
 - Our step-by-step video tutorials can make this a painless process.



Supporting You

- YouTube channel = TTimber
 - Timberpad Pro has 8 videos, almost an hour of quality tips & pointers
 - TallTimber has 14 videos, over an hour of targeted instruction
- Hard copy and digital manuals
 - Digital manuals available on-line
 - Chapter sections linked to the YouTube videos
- Real people with inventory experience
 - Hunter and Todd look forward to helping you



Timberpad Pro and TallTimber

- Forest inventory software
 - Timberpad Pro is the data collection side, includes GPS if on device
 - TallTimber is the processing, reporting, and FVS growth modeling
- Timberpad is for Android, Apple, and vintage Windows devices
- TallTimber uses Access or Access Runtime (available for FREE)
- Website has support info, links and purchase functionality

www.ttimber.com



Who Said Support Can't Be Fun???

TallTimber Cruise Processor

FILE HOME CREATE EXTERNAL DATA DATABASE TOOLS ADD-INS

STAND AND TONS STOCKING EST...
Stand and Merchantable Tons Stocking Estimates by Type, Stand or Stand

BASAL AREA DISTRIBU...
Basal Area Distribution by Stand or Stand Group

BOARD FOOT VOLUME DISTRIBU...
Board Foot Volume Distribution by Type, Stand or Stand

Stand and Stock Charts Volume

TALLTIMBER®
Stand and Stock
Stand, Merchantable ton, Height Stocking at Type or Stand level:
Stand, Board Foot, Height Stocking at Type or Stand level:
Stand and BA Stocking at Type or Stand Level Report:

International 1/4" Rule

Video #5: Merchantable and Regeneration Settings

Report Grid Data

Report Grid Data

qryGrid_Totals_by_DBH

Spp_Name	DBH	BA_Expand	TPA_Expand	Gross_Cords	Merch_Cords	Veneer_BF	Veneer_CF	Sal
Hemlock	6	110.29	561.74	9.18	9.18	0.00	0.00	
Balsam fir	7	330.88	1238.12	50.94	50.94	0.00	0.00	
Balsam fir	8	110.29	315.98	21.60	21.60	0.00	0.00	
Balsam fir	9	441.18	998.65	87.17	87.17	0.00	0.00	
Balsam fir	10	110.29	202.23	25.99	25.99	0.00	0.00	
Balsam fir	13	110.29	119.66	24.71	24.71	0.00	0.00	
Balsam fir	15	220.59	179.76	54.59	54.59	0.00	0.00	
Balsam fir	18	110.29	62.42	36.73	36.73	0.00	0.00	
Balsam fir	6	661.76	3370.44	107.51	107.51	0.00	0.00	
Hemlock	7	330.88	1238.12	35.09	35.09	0.00	0.00	

Record: 1 of 372

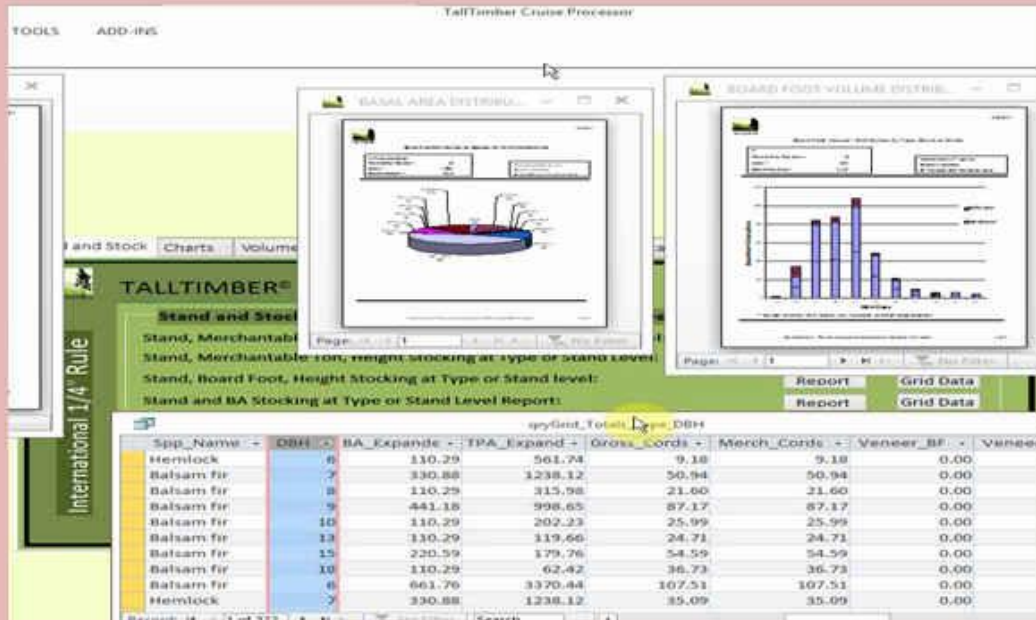
Datasheet View

NUM LOCK

8:53 AM 7/5/2017



Better Forest Inventory Reporting, Growth Model Integration, Deeper Insight with TallTimber 3.0



Thank
You!



Free technical support

Academic Licenses Available

For more information visit our website: www.tt timber.com

3/12/2018